



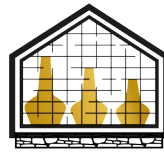
Cumann Taisbeantas Tortha Talmhaíochta
agus Tionscail Iar-Dheisceart Thir Chonaill Teo.
(S.W. Donegal Agricultural & Industrial Show Ltd.)
A member of the Irish Shows Association

ARDARA SHOW

Saturday, 13th August 2022

PRIZE SCHEDULE

Newly located at Pearse Memorial Park, Ardara GAA Grounds, F94 YV6S



ARDARA DISTILLERY
THE HOME OF SLIABH LIAG DISTILLERS



CLOSING DATE FOR ENTRIES
SUNDAY 24TH JULY



All Enquires to the Show Secretary
Tel: 087 674 1554 Email: ardarashow@gmail.com

PLEASE ASSIST US BY GETTING YOUR ENTRIES IN EARLY



TRADE STAND SPACE MUST BE BOOKED IN ADVANCE

Show Dance at the Nesbitt Arms with the Duck Street Jam Band

ARDARA SHOW 2022

*We are delighted to welcome on board
as our Main Sponsor for 2022*



ARDARA DISTILLERY
THE HOME OF SLIABH LIAG DISTILLERS

It is very fitting that this great company is now built on what will always be known as The Show field which we also called home for many years.

We have been very fortunate to have relocated to the facilities of Pearse Memorial Park, Home of the Ard an Ratha GAA Club and we are very thankful to all the committee for allowing us the use of Pearse Memorial Park on August 13th 2022.

SEE YOU ALL ON SHOW DAY!



Message from our National President CATHERINE GALLAGHER



Having completed two years as National President of the Irish Shows Association, we hosted the Organisation's first ever Virtual Show which was held in August of 2020. In 2021, the ISA organised three physical events which were staged behind closed doors. These consisted of two Horse Sport Ireland National Championships, one held in Charleville, County Cork and the other in Hannon's Show Field, County Roscommon. The third event was the All-Ireland Young Stockperson Competition. This was a stand-alone event and was new to the Irish Shows Association calendar, which took place in Tullamore Mart. I would like to thank Horse Sport Ireland, FBD Insurance, the Farmer's Journal and a number of other sponsors, for their very kind support in the above competitions. Due to the absence of physical shows taking place, this gave the organisation time to reflect on how we conducted our business and it inspired us to plan for the future. Most of the Irish Shows Association's time was taken up exploring fundraising options and improving structures for the overall benefit of the organisation.

We are now in the age of global computer technology and it is imperative that we as an organisation embrace change. The Board of the Irish Shows Association are currently in the process of procuring substantial funding from the Department of Rural and Community Development through the Leader Programme, to develop computer software packages for our member shows going forward. If successful in securing this funding, I, as President would urge all Show Committees to give the matter serious consideration, as this is a once off opportunity to avail of a bespoke software package for member shows.

I would like to greatly acknowledge the Department of Rural and Community Development, also the Department of Agriculture Food & Marine for their generous support.

I very much appreciate the year's extension given to me in the office of Presidency. This will give me my first opportunity to visit as many shows and events as tenable for 2022 as President.

Ardara Show 2022

For the past two years the world has experienced the most difficult times of our generation throughout the Covid-19 Pandemic which no one has witnessed the likes of since the Spanish Flu going back over one hundred years ago. The 22 nd of January 2022 was an uplifting day for our Nation, when our Taoiseach Micheál Martin announced the removal of most of the restrictions which were in place. With normality now set to resume shows should eagerly proceed to plan their events for the upcoming season. I would advise all committees to act prudently.

I would like to thank the Board Members, my fellow Officers, and Regional Committees for all their assistance.

A special word of thanks to our National Secretary, Jim Harrison for his tremendous hard work over the past two years.

In conclusion, we are looking forward to welcoming back our many patrons and exhibitors. Both the public and businesses have endured difficult times over the past two years. In order to overcome these challenges, we must come together and work collectively to achieve prosperity into the near future.

Catherine Gallagher

National President



Front Row—Catherine Gallagher (National President ISA), Gino O'Boyle (Mayor of Borough Municipal District of Sligo, Mary O'Keeffe (ISA). Back Row—Bill Leeman (National Vice President ISA), Paddy Joe Foy (Western Region Chairman ISA), David Devane (National Treasurer ISA)

Ardara Show 2022

NOTICE

1. All animals must be in show field at least half an hour before judging of their section is due to commence
2. New sponsors always welcome
3. Trade stands must be booked in advance
4. To avoid any confusion regarding perpetual trophies at this show please note that all trophies are perpetual and cannot be won outright
5. All perpetual trophies must be returned to the show secretary in good condition at least four weeks before the date of show.

DON'T MISS THE SHOW DANCE

SHOW DANCE

**THE NESBITT ARMS HOTEL WITH
THE DUCK STREET JAM BAND**

Ardara Show 2022

ACKNOWLEDGMENTS 2022



**Department of Rural and
Community Development**



*An Roinn Forbartha
Tuaithe agus Pobail*



Department of
**Agriculture,
Food and the Marine**

An Roinn
**Talmhaíochta,
Bia agus Mara**



FBD
INSURANCE



HORSE SPORT
IRELAND

The Irish Show Association would like to acknowledge the very generous grant made to 120 of our Shows by the Department for Rural & Community Development, and to thank Minister Heather Humphreys TD and Michael Ring TD for their great help. It will really make a great difference to the Shows many of which might not be able to run had they not received this funding.

The Irish Show Association would like to acknowledge the grant from the Department of Agriculture Food and the Marine towards Insurance rebate. It does really make a great difference to our hard pressed Shows.

The Irish Show Association would like to acknowledge and thank FBD for the very generous grant they make available to us each year. We use the grant to promote safety at all our shows and provide High Visibility Vests to our Shows as well as holding Safety Seminars in our five Regions

The Irish Farmers Journal and FBD have made available sponsorship and advertisement for our brand new Young Stock Person Championship. The Irish Shows Association would like to acknowledge this on behalf of our shows.

The Irish Show Association would like to thank and acknowledge the funding from Horse Sport Ireland over many years it is greatly appreciated by the Irish Show Association and all the Loyal Equine Breeders who avail of it and support our Shows.

We also want to thank all the other very generous firms & individuals who sponsor all our competitions and indeed our member Shows around the country year in year out. Without this support our Shows would not be able to continue in business.

Ardara Show 2022

SHOW AREA DEFINED:

1. Competition is Open except where defined as above or confined to Ardara Parish
2. **CONFINED CATTLE EXHIBITS must be the property of the exhibitor for at least six months before date of Show.**
3. Exhibits in the Farm and Garden Produce, Industrial Sections, must have been grown by the exhibitor
4. The Show Secretary, acting through her officers, may refuse an entry without assigning any reason.

5. The Show Executive while cataloguing the exhibits will not accept liability for any error in the numbering of the exhibits, for any exhibit not being properly displayed, or for loss of, accident or damage to an exhibit.
6. The judges may withhold a prize in any class in which in their opinion, there is not sufficient merit. The judges' decision to "merit" will be final.
7. All trophies are perpetual unless otherwise specified and cannot be won outright.
8. Entry Fee must be paid when entering. All entries must be received on or before the closing date. No late entries accepted.
9. In the case of only one exhibit in a Class, the Judge may award a 1st prize if in his/her opinion the quality is high enough, otherwise a merit may be awarded.
10. In Classes where there are ten or more entries the Judges may award an additional prize, if exhibits in their opinion warrant such an award; 4th prize is equal to 3rd prize.
11. Animals for exhibition at the Show must be in the Show Grounds at least 30 minutes before judging commences in their section, must be haltered and trained to the lead.
12. No exhibit will be removed from the Show Grounds without permission from the Chief Steward whose name will appear in the Show Catalogue.
13. Any statement re ownership wrongly and intentionally made in the Entry Form (in the opinion of the Executive Committee) automatically disqualifies the exhibitor.
14. All prizes must be claimed on the day of Show.
15. As judging starts in the marquee at 10 am, all exhibits must be in the marquee before 9.30 am, on date of Show.

16. The Show Society reserves the right to postpone the Show or part thereof, definitely or indefinitely, without incurring any liability to any exhibitor or other party exhibitor or other party.
17. N.B. – Prize-winning exhibits at previous Shows in Ardara will not be eligible for any of the Competitions in the Industrial Section and must not be entered.
18. Exhibits not to be removed from the marquee before 5pm.
19. Only entries accepted by the Secretary are eligible for judging.
20. New members shall not be entitled to vote until the meeting following acceptance of membership.
21. No entry will be accepted from anyone who fails to return trophies on time.
22. In accordance with Irish Shows Association Rule 5% of the prize money must be deducted in all cattle, horse and sheep classes and forwarded to them, to help defray their costs.
23. Exhibitors are required to pay admission charge. If your entry fee is €80 or more you will receive 2 Show field passes.
24. Any person who interfered in any way with a judge will forfeit any prizes he/she may have won in any section of the Show, and will be barred from entering or exhibiting at Ardara Show for a period that will be determined by the Executive Committee.
25. Any Entry not in place by the stated time will not be judged.
26. The general public will not be permitted in the Marquee during judging.
27. During judging stewards will not accompany judges in sections where they have entries.
28. Shows and competitors must contact the I.S.A. for all details and information concerning these Championships and not the sponsor.

Ardara Show 2022

29. The committee reserves the right to cancel a class based on insufficient numbers, if this happens all entry money will be returned.
30. Any objections or complaints must be lodged in writing with the I.S.A. representative at the show and the Show Secretary within half an hour following the completion of the competition, together with €50 or other stated fee which is refundable in the event of the objection being upheld.
31. All cattle are strictly commercial unless otherwise stated.
32. No Calves allowed in the No Permanent Teeth Section.
33. All exhibitors are responsible for their own entries and ensuring they are entered in their proper class.
34. The show society retains the right to adjust any classes as they see fit on the day of the show.
35. If there are insufficient entries in any classes, the classes may be amalgamated. This will be on a case-by-case basis

For the efficient running of the championships all concerned are requested to read and observe the Rules set out below.

GENERAL RULES FOR IRISH SHOWS ASSOCIATION CHAMPIONSHIPS 2022

A. ELIGIBILITY OF SHOWS

Shows wishing to participate in the 2022 Championships and be eligible to hold qualifiers must have collected the Championship Fund Levy (currently 5%) from Horse, Pony, Cattle and Sheep class prize money for the year 2019 and forwarded the amount so collected, in full, to the Irish Shows Association Head Office within the stipulated period of not more than **30 days** from the date of their show.

Alternative methods of meeting this obligation are not acceptable.

Any show or competitor in breach of the Rules set out below will be disqualified from participating or competing in these championships.

These General Rules and those relating to individual championships (where applicable) should be published in the show schedule and catalogue of the participating shows and must be strictly observed.

B. SHOWS HOLDING QUALIFIERS

Qualifying rounds will take place at eligible shows selected by the Irish Shows Association.

C. RESPONSIBILITY OF SHOWS HOLDING QUALIFYING ROUNDS

1. Selected shows **Must** hold a separate class for each qualifier from which the highest placed animals will qualify.
2. The qualifier class if possible should be held as the **first** class in the relevant section of the show.
3. Shows must ensure that the qualifiers are held strictly in accordance with the relevant rules.
4. No other sponsor may be involved in qualifiers **“No Prize-money to be paid to qualifiers”**.
5. Shows may charge an entrance fee for each qualifying class. *The I.S.A. will award a rosette to successful Qualifiers on appearance at the Finals.*
6. A show hosting a Championship Final may not hold a qualifier for that Championship on the day of the Final other than by agreement with the Irish Shows Association. **However**, Shows who hold qualifiers for **Horses, Ponies & Cattle** may ask exhibitors to enter the exhibit in **at least one other class** at their show.
7. Animals qualified for Finals are **not** eligible to enter in any other class at the Show where the Final is held (**other than a Qualifying Class for another Competition**).

8. Shows **should** appoint competent persons to act as Stewards, who must ensure that only animals (or other exhibits) which are eligible to compete and those whose documentation is in order are allowed to proceed to the judging ring.

9. Animal Passports & “Micro Chips where applicable” **should** be read by a Veterinary Surgeon appointed by the show.

10. **On completion of judging, Stewards should instruct the successful competitors to attend at the Show Secretary’s Office within one hour** and to complete the necessary documentation for entry to the championship final.

11. The show Should appoint a well-briefed officer, who will be in attendance at the Secretary’s Office, and who will assist exhibitors to complete the necessary documentation for participation in the final and to collect the relevant entrance fee.

12. Show Secretaries must forward completed result cards, together with appropriate fees to the Irish Shows Association within three (3) days following the holding of the show. *N.B Shows must return results card marked “No Competition” for any or all of the events for which no animal (or exhibit) has been selected.*

D: RESPONSIBILITY OF EXHIBITORS

1. Exhibitors accept that the Judges decision is final in all cause.

Any abuse of Judges will not be tolerated. Where a dispute or case for complaint arises the matter should only be dealt with under 6. Below.

2. Winners of qualifiers are themselves responsible for entering their animals (or exhibits) for the final in accordance with j. and k. above, within one hour of qualifying.

3. Winners of qualifiers will compete in the final.

4. The Irish Shows Association in conjunction with the sponsor reserve the right to alter or amend the rules of any competition as may be necessary or appropriate.

5. Shows and competitors must contact the Irish Shows National Office for details of any championships and **not** the sponsor involved.

6. **Objections** must be lodged in writing with the Show Secretary or with the I.S.A representative at the show within half an hour of the completion of judging, together with a fee of €50 or other stated fee, which is refundable in the event of the objection being upheld.

7. Any Exhibitor who makes a false declaration or misrepresents a fact regarding themselves or their exhibit is liable to disqualification and or forfeiture of any prizes awarded.

It is in the interest of Shows hosting championship Finals that photographs and results are forwarded to the Irish Farmers Journal or other papers immediately following Judging.


E. RESPONSIBILITIES OF SHOWS HOSTING CHAMPIONSHIP FINALS

1. A deduction of 5% of the prize money is to be collected by the Show and forwarded to the Irish Shows Association within **30 Days of the final**.
2. Championship finals should start **not later than 2 pm on the day of the show** & the advertised time of starting **Should** be adhered to as far as practicable, if necessary, other show classes should be either postponed or relocated to allow this.

NOTICES OF INTEREST TO CHAMPIONSHIP PARTICIPANTS IRISH LAW (EU DIRECTIVE)

Under Irish Law all horses moving from one location to another must be accompanied by their passports. It is in your own interest to ensure this is the case. Failure to do so is an offence under Irish Law and is liable on summary conviction to result in a fine up to €3000. All passports must be registered with the name of the current owner.

Embryo Transfer: Where a foal is produced by this method the dams passport must bear a declaration dated, stamped and signed by the stallion owner (or accredited practitioner where AI is involved) stating the date on which the dam was last covered (or inseminated) and the name of the covering stallion.



***The
Annual General Meeting
and Dinner Dance***

**Saturday
26th November 2022**

Breaffy House Hotel
Castlebar, Co. Mayo

AGM: 2pm

**Dinner Dance:
7.30pm**

IMPORTANT NOTICE TO ANIMAL OWNERS INVOLVED IN SHOWING ANIMALS

The I.S.A. would advise all Animal owners who have their Animals insured to have the Insurance cover extended to cover them while showing Animals at Shows. We understand that it costs very little or nothing at all depending on who you have Insurance cover with.

If you are one of the few who don't have cover, we would advise that you think about putting it in place for this purpose. It may be well worthwhile.

The reason for us giving you this advice is to protect yourself in the event of your animal lashing out, and injuring someone or damaging someone's property, if that were to happen, and it is established that your animal was out of your control you may be held responsible, or partly responsible for any injury or damage caused and may end up paying all, or part of any settlement reached.

DISCIPLINE

The Irish Shows Association expects and will insist upon appropriate behaviour from all Exhibitors and others participating in any of the activities at our Member Shows and will not tolerate inappropriate behaviour.

Inappropriate behaviour shall include but not be limited to the following:

- Profanity, coarse or vulgar language or gestures towards judges or other Show Officials.
- Harassment or bullying, including using words or actions that threaten, intimidate or undermine judges or other officials before, during or following Member Show activities.
- Failure to follow rules and / or obey instructions.
- Abusing any animal.

Disciplinary Procedures:

- Complaints of misconduct against an Exhibitor or other participant at a Member Show shall be investigated and adjudicated upon by a subcommittee appointed by the Irish Shows Association.
- The said subcommittee shall consist of three members of the board of the Irish Shows Association and shall be known as the Disciplinary Committee.
- The Disciplinary Committee shall seek to ensure the existence of consistent, effective, fair and transparent complaint procedures and shall act in accordance with natural and constitutional justice.
- For full details refer to our 2022 yearbook or visit website on www.irishshows.org

Ardara Show 2022

PONIES (OPEN)

Prizes: €50, €30, €20

Entry Fee: €8

Judging Commences 10 a.m.

Ponies will be judged first followed by horses. All foals must be led.

Class 1: Registered Connemara Brood Mare

Conal Watters Memorial Cup

Class 2: Ponies at or under 128cm

Class 3: Ponies exceeding 128cm, not exceeding 138cm

Class 4: Ponies exceeding 138cm, not exceeding 148cm

Colm Breslin Cup

Class 5: Mare under 148cm, with foal at foot

Billy Boyd Cup

Class 6: Ponies up to 148cm confined to Ardara Parish

Special Sash for best turned-out Handler

Shaun Molloy Perpetual Cup

Class 7: Champion Pony Foal, Colt or filly

Hugh Gildea Memorial Cup

Class 8: Welsh Pony Pure Bred (Must be registered with WPCS)

NWIAWPCS Perpetual Cup

Class 9: Welsh Pony Part Bred (Must be registered with WPCS)

CHAMPION PONY OF SHOW excluding Class 6

Special Sash

WOODHILL HOUSE CUP

Ardara Show 2022

HORSES (OPEN)

Prizes: €50, €30, €20

Entry Fee: €8

Judging Commences after pony judging has concluded.

Class 10: Best Friesian Horse, Any Age

Class 11: Mare or Gelding, any age agricultural type

Class 12: Brood Mare with Foal at Foot

Special Sash for Best Foal on Show

Con Gillespie Memorial Cup

Class 13: Mare or Gelding, 3 years or over likely to make Heavy Hunter

Castlegolan Cup

Class 14: Mare or Gelding, 3 years or over likely to make Light Hunter

Class 15: Best-Coloured Horse/Pony shown in Hand

Class 16: Registered Irish draught Mare or Gelding 3 years and under

Michael Kennedy Cup

Class 17: Registered Irish Draught Mare or Gelding 3 years and over,

Class 18: Best working Cob sponsored by K.E.R Killybegs

CHAMPION HORSE OF SHOW **Hugh Byrne Memorial Cup & Sash**

RESERVE CHAMPION HORSE OF SHOW **Sylvester Mulhern Memorial Shield**

RIDING CLASSES

Class 19: Best Riding Class for under 12 years of age

Class 20: Best Riding Class for 13 to 18 years of age

Class 21: Best Riding class for adults

All horses/ponies must be kept under control. All riders must wear a helmet and back protector. The show committee will not take responsibility for anyone who does not adhere to these rules

Ardara Show 2022



Important Information for Organisers and Exhibitors at Livestock Shows,

2022

SPECIFIC REQUIREMENTS - CATTLE

The requirements set out below are intended to protect the health of the animals at shows and sales, to minimise the risk of exposure to disease.

Exhibitors should:

Move animals direct from farm to show grounds. Disinfect the vehicle used to transport animals before and after use. Insist that all steps necessary to protect animals are taken by the show Committee. Ensure that the required documentation which should accompany the animal is in order before the date of the Show and contact the local District Veterinary Office when deciding to exhibit at any show.

ANIMAL HEALTH STATUS

TB

All animals must come from herds which are not restricted and have a clear herd test within the previous twelve months.

No pre-movement test is required for TB; however, it is recommended by the department that a 30-day pre-movement test for TB should apply to all Shows and Sales

BRUCELLOSIS

All animals must come from herds which are not restricted.

All eligible animals (i.e., females aged 12 months and over and bulls aged 12 months and over) must be 30-day pre-movement tested for Brucellosis. However, these animals may move to any number of shows within the validity period of the same 30-day pre-movement test.

However, female animals aged 18 months and over and bulls aged 12 months and over may only be sold on foot of any 30-day pre-movement test. No animals allowed entry without current cattle test and ID Card.

Ardara Show 2022

CATTLE OWNERS

**Please make sure you have
your movement forms with
you on the day**

**Please call your local DVO
for cattle movement form
well in advance**

CATTLE (CONFINED)

Prizes: €60, €40, €20

Entry Fee: € 8

Cattle judging commences at 10.00 a.m.

ALL CALVES MUST BE EXHIBITOR BRED

No Calves allowed in the No Permanent Teeth Section.

Class 22: Beef Type Heifer showing no permanent teeth.
Not eligible for entry in class 23.

Robert Smyth Cup

Sponsored by The Milltown Bar

Class 23: Best Breeding Heifer showing no permanent teeth.

Ardara Rowing Club Cup

Class 24: Best Breeding Heifer showing 2 or more permanent teeth.
Class 23 & Class 24 not eligible for entry in Class 25 or Class 26

Class 25: Beef Type Cow or Heifer other than Charolais in Milk or in Calf.

Harold Hennigan Cup

Class 26: Charolais Type Cow or Heifer in Milk or in Calf.

Dean Boyce Cup.

Class 27: Suckling Cow with own Calf at Foot, Male Calf not exceeding 400kg, female Calf not exceeding 360kg.

Hamilton Baskin Cup

Class 28: Charolais Bull Calf, not exceeding 400kg.

Neil Craig Memorial Cup

1st Prize - Feed Voucher Sponsored by R Smyth & Sons Ltd.

Class 29: Charolais Heifer Calf, not exceeding 360kg.

Billy Mc Nelis Memorial Cup

1st Prize- Feed Voucher Sponsored by R Smyth & Sons Ltd.

Ardara Show 2022

Class 30: Best Limousin Calf Male, not exceeding 400kg.

Dinny Mc Ginley Cup

1st Prize-Feed Voucher Sponsored by R Smyth & Sons Ltd.

Class 31: Best Limousin Calf Female, not exceeding 360kg.

John Sharpe Memorial Cup

1st Prize- Feed Voucher Sponsored by R Smyth & Sons Ltd

Class 32: Best Belgian Blue Calf Male or Female, Male calf weighing between 251kg to 400kg, Female calf weighing between 251kg to 360kg.

Thomas Boyle Memorial Cup

1st Prize- Feed Voucher Sponsored by R Smyth & Sons Ltd.

Class 33: Best Belgian Blue Calf Male, weighing 250kg or under

Mary Cunningham Memorial Cup

1st Prize – Feed Voucher sponsored by R Smyths & Sons Ltd

Class 34: Best Belgian Blue Calf Female weighing 250kg or under

Sean Gallagher Memorial Cup

Class 35: Best Homebred Animal excluding Calves and Pedigrees

Ciaran Gallagher Haulage Cup

Sponsored by POD Trak Ltd.

Class 36: Best Pair of Animals from one herd, any age, any breed, excluding Pedigree.

Francie McCafferty Cup

Sponsored by POD Trak Ltd.

CHAMPION & RESERVE CALF OF CONFINED CLASSES

John Gallagher Cup

CHAMPION & RESERVE ANIMAL OF CONFINED CLASSES

Wee Stephen Memorial Cup

Champion Prize: €80 Voucher from Elite Pedigree Genetics

Reserve Prize Money: €50 sponsored by Barry Doogan AI Services

Ardara Show 2022

CATTLE (OPEN)

Prizes: €60, €40, €20

Entry Fee: € 8

Class 37: Best Breeding Heifer showing no more than 2 permanent teeth.

Class 38: Best Non-Pedigree Male Calf, weighing between 251kg to 400kg.

Class 39:	PRIZE FUND €300 Entry Fee €10 SPONSORED BY: Bluestack Veterinary Services Best Non-Pedigree Male or Female Calf not exceeding 250kg PRIZE FUND: 1ST Prize: €150 2ND Prize: €100 3RD Prize: €50
-----------	--

Class 40:	PRIZE FUND €500 Entry Fee €10 SPONSORED BY: Mobile Weighing Services Best Non-Pedigree Female Calf weighing between 251kg - 380kg PRIZE FUND: 1ST Prize: €250 2ND Prize: €150 3RD Prize: €100
-----------	---

Class 41:



THE IRISH SHOWS ASSOCIATION AND THE
DEPARTMENT OF AGRICULTURE PRESENTS

THE BREEDER'S CHOICE CONTINENTAL 4* OR 5* BREEDING HEIFER

SPONSORED BY THE DEPARTMENT OF AGRICULTURE

RULES AND CONDITIONS

PRIZE FUND €750

1. This competition is open to All Continental Genotype 4* or 5* Breeding Heifers, suitable to make a Suckler Cow.
2. Full tag number must be submitted with entry to ensure that genotype rating can be verified.
3. Heifers may be in calf or maiden. All Heifers must be between 12 months and 24 months of age on the date of the show.
4. Each Heifer can only enter this competition at up to five shows. If a heifer enters more than five shows, any further prizemoney will be forfeited.
5. All Heifers must be halter-trained and led by a competent adult.
6. The foregoing rules should be read in conjunction with ISA General Rules.

Entry Fee: €15

PRIZE FUND: 1ST Prize: €250, 2ND Prize: €125, 3RD Prize: €75, 4TH-8TH Prize: €50

Ardara Show 2022

COMMERCIAL CHAMPION & RESERVE

Sponsored by Seamus Nagle, Bull Bank, Co. Clare

Champion Prize: €100 Voucher / Reserve Prize: €50 Voucher

PEDIGREE CHAROLAIS SECTION

Prizes: €60, €40, €20

Entry Fee: € 8

- Class 42: Pedigree Charolais Male Calf born from 1st September 2021 to 31st December 2021
- Class 43: Pedigree Charolais Female Calf born from 1st September 2021 to 31st December 2021
- Class 44: Pedigree Charolais Male Calf born from 1st January 2022
- Class 45: Pedigree Charolais Female Calf born from 1st January 2022
- Class 46: Pedigree Charolais Cow or Heifer born on or before 31st August 2021

OVERALL CHAROLAIS CHAMPION & RESERVE

(Classes 42 - 46)

Sponsored by Dawros Bay Hotel

Champion Prize: €100 / Reserve Prize: €50

Ardara Show 2022

SHEEP

Department of Agriculture, Food and the Marine 2022 SPECIFIC REQUIREMENTS - SHEEP

Identification

All sheep must be identified individually with appropriate ear tags issued in accordance with the requirements of the National Sheep Identification System (NSIS).

Movement Documentation

All consignments of sheep being moved must be accompanied by a completed dispatch document. Individual details of each sheep in the consignment must be recorded on the document. Sheep from non-restricted flocks only can be moved to shows. In the case of flocks restricted following diagnosis of scrapie, sheep possessing the ARR ARR genotype only may be exhibited. The movement of these ARR/ARR genotype sheep must be accompanied by the relevant movement permit (SCR/10), which can be obtained from the local District Veterinary Office in the county where the flock is located.

AIM Notification

The movement of sheep to and from an Agricultural Show within the State must be recorded on AIM. This is done using a copy of the owners sheep dispatch document as follows:

The owner/keeper presents the signed and completed dispatch document with (i) the show number, (ii) the date of the move back to the source holding (iii) stamps it with the show stamp and (iv) signs the dispatch document.

The show secretary keeps white copy for his/her records.

The source/destination keeper keeps the bottom yellow copy to enter it into their flock register.

Flock Register

All movements of sheep to and from shows must be recorded in the keeper's flock register.

Exports to Northern Ireland

All sheep must be accompanied by a TRACES intra-community trade certificate for ovine animals. A TRACES message, corresponding with the TRACES certificate, will be sent for each animal or consignment being dispatched to the show (this will be performed by Department officials of the DVO). Exhibitors are advised to contact the show society in Northern Ireland well in advance of any show to determine the suitability of the show for return of animals (e.g., premises and sheep status), and whether the authorities will have officials and veterinary staff present to supervise and process documentation for animals returning to origin.

For further information on our website

www.irishshows.org

SHEEP (OPEN)

Dyeing of sheep allowed in Open Classes & Confined Classes
Judging commences at 11.00 a.m.

Class 47: THE IRISH SHOWS ASSOCIATION PRESENTS:

THE ECTOFLY EWE LAMB SCOTCH BLACK FACE EWE LAMB FINAL

Sponsored by Midlands Veterinary Ltd

RULES & REGULATIONS

1. Entry is confined to a pair of Ewe Lambs, which will be judged as a pair.
2. All classes are open to pedigree and non-pedigree flocks.
3. A competitor may enter two pairs of Ewe Lambs from his or her flock.
4. Entries to be made direct to the Secretary of the show.

ENTRY FEE: €10 PER PAIR OF EWE LAMBS.

PRIZES FUND

Champion Pair:	5 Ltr of Ectofly, €50 & Trophy
Second:	5 Ltr of Ectofly
Third:	2.5 Ltr of Ectofly
Fourth:	2.5 Ltr of Ectofly

Ardara Show 2022

SHEEP (OPEN)

Dyeing of sheep allowed in Open Classes & Confined Classes

Prizes: €50, €30, €20

Entry Fee: € 6

BLACKFACE SECTION

Class 48: Best Blackfaced Ewe Lamb

Class 49: Best Blackfaced Ewe, 1 year old

Class 50: Best Blackfaced Ewe, 2 years and over

Class 51: Best Blackfaced Ram Lamb

Class 52: Best Blackfaced Ram, 1 year old

Class 53: Best Blackfaced Ram 2 Years and Over

Class 54:

PRIZE FUND €300

Entry Fee €10

Sponsored by Mobile Weighing Services

Blackfaced Group Class. Best group of 3 only and one animal from any one Blackfaced Class, to be shown in group.

PRIZE FUND: 1ST Prize: €150 2ND Prize: €100 3RD Prize: €50

Conditions: Mixed class only. Any Age.

CROSSBRED SECTION

Class 55: Best Cross-Bred Ewe Lamb

Class 56: Best Cross-Bred Ewe, 1 year old

Class 57: Best Cross-Bred Ewe, 2 years, or over

INTERBREED SECTION

Class 58: Best Butchers Lamb Excluding Pedigree

Class 59: Best Pedigree Ewe Lamb excluding Blackface

Class 60: Best Pedigree Ram Lamb excluding Blackface

MAYO BLACKFACE MOUNTAIN SECTION

Sponsored by Boyle Agri & Thompson Feeds

Class 61: Best Ewe Lamb

Class 62: Best Ram Lamb

Ardara Show 2022

HORSE & PONY ENTRY FORM

Ardara Show 2022

S.W. DONEGAL AGRICULTURAL & INDUSTRIAL SHOW LTD
PLEASE COMPLETE IN CAPITAL LETTERS

Owners' Name Address

Phone Number:
Email:

Premises Number

[illegible]

I hereby certify that the contents of this entry form are true to the best of my knowledge and belief, and that my insurance is up to date and in order. I agree to conform to the rules and regulations of The Show Society.

Signature of Exhibitor or Agent Date Entry Fee

PLEASE RETURN ENTRY FORM TO TRACEY MCGILL, ARDARA SHOW OFFICE, ARDARA, CO. DONEGAL BEFORE 24TH JULY 2022

CATTLE ENTRY FORM

Ardara Show 2022

Ardara Agricultural Show

**ALL TROPHIES FROM THE 2019 SHOW
MUST BE RETURNED BY 24TH JULY 2022**

See special notices on trophies

CATTLE ENTRY FORM

Class	Description of Animal	Age	Tag No.	Entry Fee

I enclose € Entry Fee(s)

Please print in BLOCK LETTERS and state whether Mr. Mrs. or Miss

Name:

Address:

.....

Date 2022

Phone no: in case we need to contact you.

I have read and agree to abide by the rules and regulations set out by the
Ardara Show Society and the Irish Shows Association.

Signed

ENTRIES TO

Tracey McGill, Ardara Show Office, Ardara, Co. Donegal.

Entries close on Sunday 24th July 2022

Ardara Show 2022

SHEEP ENTRY FORM

Ardara Show 2022

Ardara Agricultural Show

**ALL TROPHIES FROM THE 2019 SHOW
MUST BE RETURNED BY 24TH JULY 2022**

See special notices on trophies

SHEEP ENTRY FORM

Class	Description of Exhibit	Entry Fee

SHEEP ENTRY FORM

I enclose € Entry Fee(s)

Please print in BLOCK LETTERS and state whether Mr. Mrs. or Miss

Name:

Address:

.....

Date 2022

Phone no: in case we need to contact you.

I have read and agree to abide by the rules and regulations set out by the
Ardara Show Society and the Irish Shows Association.

Signed

ENTRIES TO

Tracey McGill, Ardara Show Office, Ardara, Co. Donegal.

Entries close on Sunday 24th July 2022

Ardara Show 2022

MARQUEE ENTRY FORM

Additional Marquee Entry Forms on page 53 - 56

Ardara Agricultural Show

**ALL TROPHIES FROM THE 2019 SHOW
MUST BE RETURNED BY 24TH JULY 2022**

See special notices on trophies

MARQUEE ENTRY FORM		
Class	Description of Exhibit	Entry Fee

I enclose € Entry Fee(s)

Please print in BLOCK LETTERS and state whether Mr. Mrs. or Miss

Name:

Address:

.....

Date 2022

Phone no: in case we need to contact you.

I have read and agree to abide by the rules and regulations set out by the
Ardara Show Society and the Irish Shows Association.

Signed

ENTRIES TO

Tracey McGill, Ardara Show Office, Ardara, Co. Donegal.

Entries close on Sunday 24th July 2022

MARQUEE ENTRY FORM

Ardara Show 2022

Class 63: Best Ewe, 1 year old

Class 64: Best Ewe, 2 years and over

LANARK SECTION

Class 65: One Lanark Ewe Lamb

Class 66: One Lanark Ewe, 1 year old

Class 67: One Lanark Ewe, 2 year or over

Class 68: One Lanark Ram Lamb

SWALEDALE SECTION

Class 69: Best Swaledale Ewe lamb

Class 70: Best Swaledale Ram Lamb

Class 71: Best Swaledale 1 year old Ewe

Class 72: Best Swaledale 1 year old Ram

Class 73: Best Swaledale aged Ewe

Class 74: Best Swaledale aged Ram

Champion Sheep of Open Blackfaced Classes
Special Rosette

Champion Sheep of Open Cross-Bred Classes
Special Rosette

Champion Sheep of Interbeed Classes
Special Rosette

Champion Sheep of Open Mayo Classes
Special Rosette

Champion Sheep of Open Lanark classes
Special Rosette

Champion Sheep of Open Swaledale Classes
Special Rosette

Ardara Show 2022

SHEEP (Confined)

Dyeing of sheep allowed in Confined Classes

(Confined to Show Area)

Prizes: €40, €25, €15

Entry Fee: €6

BLACKFACE SECTION

Class 75: Best Pair of Scotch Mountain Ewe Hogget's
(NO DYEING ALLOWED)

Class 76: One Blackfaced Ewe Lamb
Pauric Breslin Memorial Cup

Class 78: One Blackfaced Ewe, 1 year old
Sponsored by Aurivo Animal Feeds

Class 79: One Blackfaced Ewe, 2 year or over

Class 80: One Blackfaced Ram Lamb

Class 81: One Blackfaced Ram, Any Age

CROSSBRED SECTION

Class 82: One Crossbred Ewe Lamb exceeding 45kg

Class 83: One Crossbred Ewe Lamb not exceeding 45kg

Class 84: One Crossbred Ewe, 1 year old

Class 85: One Crossbred Ewe, 2 year or over

INTERBREED SECTION

Class 86: One Best Factory Lamb excluding pedigree

Class 87: One Best Stock Ram, Any Age, (Excluding Blackfaced)

Class 88: One Best Pedigree Ram Lamb, (Excluding Blackfaced)

Class 89: One Best Pedigree Ewe Lamb, (Excluding Blackfaced)

Class 90: One Best Pedigree Ewe, 1 year old, (Excluding Blackfaced)

Sponsored by: Donegal Texel Breeders

Class 91: One Best Pedigree Ewe 2 year or older, (Excl Blackfaced)

Champion Sheep of Confined Blackfaced classes

Danny and Philip Shovlin Memorial Cup

Special Rosette

Champion Sheep of Confined Cross-Bred Classes

John Mc Nelis, Mac Plant Hire Perpetual Cup

Special Rosette

Champion Pedigree

Special Rosette

Champion Sheep of Confined Interbreed classes

Special Rosette

Champion SHEEP Young Handler Male or Female

(Judged on Stockmanship / Style and Appearance)

Class 1000 Uncle 11 years old

Class 2000 12 years old to 16 years old

1st, 2nd and 3rd prizes - Trophies

**All entrants will receive a rosette for taking part
FREE ENTRY**

Please enter Before 24th July

Ardara Show 2022

MARQUEE

Judging Commences at 10.00 a.m.

Prizes: €10, €7, €5

Entry Fee: €3

HONEY

Class 100: Three sections of honey, evenly coloured, of any colour.

Class 101: Jar of Honey

VEG. & FARM PRODUCE (OPEN)

Prizes: €10, €7, €5

Entry Fee: €3

Highest total points in Classes 102-122 – H F Maloney Cup

Class 102: Six Early Potatoes

Class 103: Six Late Potatoes

Charlie Deane Memorial Trophy

Class 104: Kerr's Pinks Only

Tommy Hamilton Cup

Class 105: Half Dozen Shallots

Class 106: Three roots of Beetroot

Class 107: Best five seed grown Onions (including sets)

Class 108: Best Twelve Pods of Peas

Class 109: Two Heads of Lettuce, crisp headed

Class 110: Two Heads of York cabbage

Class 111: Two Heads of Cabbage – Any Variety

Class 112: Best Cauliflower

- Class 113: Three roots Parsnips
- Class 114: Three roots Carrots
- Class 115: Three Stalks Rhubarb
- Class 116: Two Stems Parsley, with roots (this year's)
- Class 117: Exhibit of Swedes, three roots
- Class 118: Two heads of Lettuce, Cabbage headed
- Class 119: Sod of Pasture – Not exceeding 12" X 12"
- Class 120: Sheaf of Oats
- Class 121: Tray of Garlic
- Class 122: Truss of Tomatoes
- Class 123: Best Collection of Fruit & Vegetables.

(Not more than 7 and less than 5)

Presentation will be taken into account.

MUST BE GARDEN GROWN

Alphonsus Gildea Memorial Cup

- Class 124: Any other vegetable not listed above
- Class 125: A Collecting of Fruit (Home Grown)-Not more than 3 varieties
- Class 126: Six White Hen Eggs
- Class 127: Six Brown Hen Eggs
- Class 128: Six Duck Eggs

FLOWERS (OPEN)

Hilda Hanlon Cup

Flowers must be home-grown.

Prizes: €10, €7, €5

Entry Fee: €3

Class 129: Vase of Gladioli, 6 Spikes.

Annie Deane Memorial Vase

Class 130: 5 Blooms of Large Flowering Dahlia

Class 131: 5 Cactus Dahlia

Class 132: 6 Stems of Ball or Pom Pom Dahlia

Class 133: Vase of 6 Roses. (Any Variety)

Nancy Yates Perpetual Cup

Class 134: Vase of Sweet Pea, 12 Spikes

Class 135: Best Specimen of Begonia

Class 136: Best Wreath Arrangement - Any Season - Artificial Flowers only

Class 137: Best Mini Arrangement of Flowers for decorating purposes (not exceeding 9" in width)

Joyce Classan Memorial Cup

Class 138: Collection of Wild Flowers

Margaret Slowey Memorial Cup

Class 139: Rose of the Show, 1 Bloom (1 prize only)

Terence Slowey Perpetual Rose Bowl

BAKING

Prizes: €10, €7, €5

Entry Fee: €3



Sponsored by Gallaghers Bake House

Exhibitor gaining the most points in the home baking section,
Classes 140 - 170, will be presented with The Nancy Solan Cup

**All bread & Cakes must be in a minimum of 6" square or round only
unless otherwise stated below**

Class 140: Soda Bread

Milford Perpetual Cup

Class 141: Soda Bread with Fruit

Gallagher's Bakery Cup

Class 142: Brown Bread

Beatrice Egan Cup

Class 143. Treacle Bread

Class 144: Banana Bread- Loaf Tin Acceptable

Class 145: 6 Potato Cake

Class 146: 6 Boxtty

Class 147: 6 Wheaten Scones

Class 148: 6 White Soda Scones

Class 149: Porter Cake

Class 150: Tea Brack

Class 151: Boiled Cake (Prizes: €13, €10, €7)

Class 152: Cherry Cake

Ardara Show 2022

Class 153: Ginger Cake (Prizes: €13, €10, €7)

Class 154: Madeira Cake

Marion Gallagher Cup

Class 155: Fruit Cake, Rich. (Prizes: €13, €10, €7).

Class 156: Fruit Cake, Light. (Prizes: €13, €10, €7).

Class 157: Marble Cake

Class 158: Sponge Sandwich or Jam Roll

Aisling House Trophy

Class 159: Coffee Sponge (Not Decorated)

Class 160: 6 Mince Pies

Class 161: Stack of Pancakes no more than 3

Class 162: 6 Assorted Home-made traybakes

Class 163: Apple Tart, Shortcrust

Class 164: Any Variety Fruit Tart

Class 165: Victoria Sandwich

Andy Rann Memorial Trophy

Class 166: Cheesecake, Any variety

Class 167: 6 Chocolate Brownies

Class 168: 6 Caramel Squares

Class 169: 6 Decorated Cupcakes

Class 170: Lemon Drizzle Cake (Loaf Tin Acceptable)

JAM MAKING

1lb Pot

Prizes: €10, €7, €5

Entry Fee: €3

Exhibitor gaining most points in the Jam section classes 171-178, will be presented with The Nan Mc Gill Perpetual Memorial Cup

Class 171: Homemade Pot of Blackcurrant Jam

Class 172: Homemade Pot of Gooseberry Jam

Class 173: Homemade Pot of Rhubarb Jam (with or without ginger)

Class 174: Homemade Pot of Marmalade

Class 175: Homemade Pot of Raspberry Jam

Class 176: Homemade Pot of Strawberry Jam

Class 177: Homemade Pot of Blackberry Jam

Class 178: Homemade Pot of Jam (Any Variety, Not Specified)



Ardara Show 2022

KNITTING

Prizes: €10, €7, €5

Entry Fee: €3

Class 179: Ladies or Gents Sweater/Cardigan-Double Wool
C. Kennedy & Sons Cup

Class 180: Hand-Knitted Hat – Aran Design.

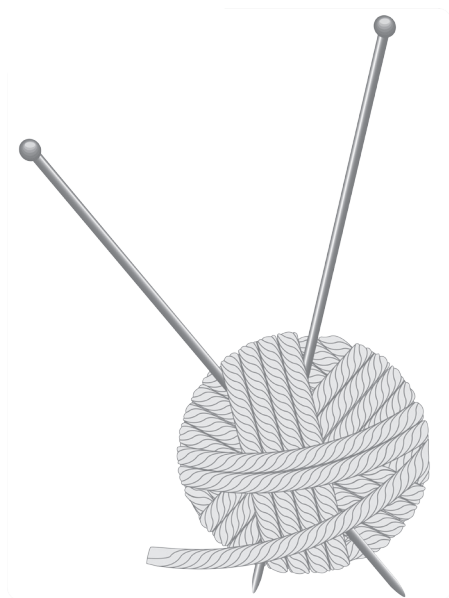
Class 181: Pair of Socks – Any wool, Plain or Fancy

Class 182: Best Hand knitted Cuddly Toy

Class 183: Best Hand knit Baby outfit

Class 184: Best Hand knitted Blanket/Throw

Class 185: Any Article in knitting not specified above



Ardara Show 2022

NEEDLEWORK (OPEN)

Prizes: €10, €7, €5

Entry Fee: €3

Exhibitors please note: Exhibits must be entrants' own work and must not have been exhibited at any previous Ardara Show. Needlework must be unframed for judging.

**The Embroiderers Cup for best overall article (Classes 186 - 191)
Sponsored by: ICA Group Ardara**

Class 186: Counted thread work e.g., drawn thread, pulled fabric, cross stitch, black work, hardanger

Class 187: Patchwork Quilt Hand or Machine sewn, quilted or unquilted

Class 188: Patchwork any article Hand sewn, quilted or unquilted

Class 189: Patchwork any article Machine sewn, quilted or unquilted

Class 190: Any Variety Fabric Craft e.g. Cuddly Toy

Class 191: Free style hand embroidery

IRISH CROCHET (OPEN)

Prizes: €10, €7, €5

Entry Fee: €3

Class 192: Any Article in Cotton Crochet

Class 193: Any Article in Wool Crochet

ARTS & CRAFTS HAND-MADE (OPEN)

Prizes: €10, €7, €5

Entry Fee: €3

Please keep exhibits to 60cms x 60cms due to space restrictions

Class 194: Irish Souvenir

Class 195: Best Example of Artistic Woodwork
Eric Hadden Memorial Cup

Class 196: Six Hand-cut Turf

Class 197: Clew of Rope

Class 198: St. Bridget's Cross

Class 199: Any item handmade from Tweed

Class 200: Best Lockdown Project



Ardara Show 2022

PAINTING (OPEN)

PAINTINGS ARE NOT TO HAVE FRAMES PLEASE

Prizes: €10, €7, €5

Entry Fee: €3

Best Overall Painting, Charles Mc Hugh Memorial Cup

Class 201: Landscape or Seascape in Watercolour

Class 202: Landscape or Seascape in Oil

Class 203: Any other Watercolour Painting

Class 204: Any other Oil Painting

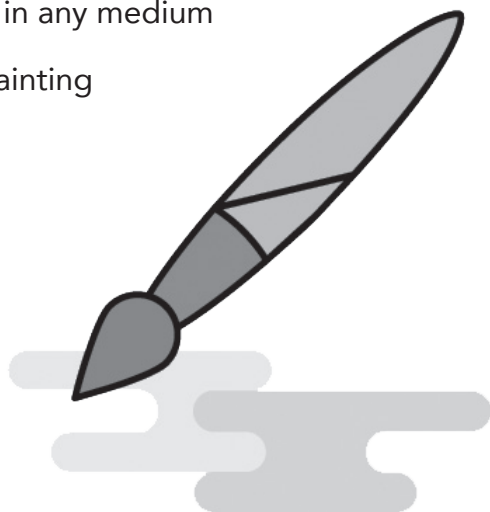
Class 205: Best example of Freehand Drawing or sketching

Class 206: Any Modern Art / Abstract

Class 207: Any Animal Portrait in any medium

Class 208: Any People Portrait in any medium

Class 209: Any Other Acrylic Painting



Ardara Show 2022

PHOTOGRAPHY (AMATEURS)

CANVAS WILL NOT BE ACCEPTED

ALL PHOTOS TO BE EITHER 6 x 4 OR 7 x 5

Prizes: €10, €7, €5

Entry Fee: €3

A prize of €25.00, sponsored by Kathleen Slowey will be awarded for the best photograph overall, Classes 210 to 216 incl. Framed or Studio Photographs will not be Judged.

Limited to 1 photo per class

Class 210: Best Colour Photograph, animal or wildlife (open)

Class 211: Best Scenic Photograph taken within Ardara Parish

Class 212: Items of Local interest, black and white-Place must be named
(Confined to Parish)

Class 213: Farm Home Scene. (Colour, Open)

Class 214: Farm Portrait, Black and White

Class 215: Best colour portrait

Class 216: Postcard View. Approx: 6"

Pat Slowey Shield

CHILDRENS SECTION (OPEN)

Prizes: Rosettes/Trophies/Plaques

Entry Fee: €2

CONFINED TO 8 YEARS OF AGE OR UNDER

Class 217: Best example of craftwork.

Class 218: Best Poster, any subject. (Not larger than A3)

Class 219: Painting in Watercolour. (Not larger than A3)

Class 220: Drawing in Pencil, Markers or Crayons. (Not larger than A4)

Class 221: Best specimen of Handwriting. (Not larger than A4)

Class 222: Best Article made from Lego or similar material.

Class 223. Best non-kit article from Lego
(Not exceeding 60cms X 60cms)

Class 224: Best Decorated Hardboiled Egg.

Class 225: Best Decorated Gingerbread Man.

Class 226: Best Decorated Wellington Boot.

CONFINED TO 12 YEARS OF AGE OR UNDER

Class 227: Best example of craftwork.

Class 228: Best Poster, any subject. (Not larger than A3)

Class 229: Painting in Watercolour, (Not larger than A3)
Donegal Creameries Cup

Class 230: Drawing in Pencil, Markers or Crayons, (Not larger than A4)

Class 231: Best specimen of Handwriting, (Not larger than A4)
P.S. Mac A Ghoill Memorial Cup

Class 232: Best Article made from Lego or similar material.

Class 233: Best non-kit article from Lego
(Not exceeding 60cms X 60cms)

Class 234: Best Decorated Hardboiled Egg.

Class 235: Best Decorated Gingerbread Man.

Class 236: Best Decorated Wellington Boot.

OPEN TO EVERYONE UNDER 16 YEARS OF AGE

- Class 237: Best Decorated Hardboiled Egg.
- Class 238: Best Decorated Gingerbread Man.
- Class 239: Best Decorated Wellington Boot.
- Class 240: Best Article made from Lego or similar material.
- Class 241: Best non-kit article from Lego
(Not exceeding 60cms X 60cms)
- Class 242: Best Ardara Show Poster. (Not larger than A3)
- Class 243: Best Anti-Litter Poster. (Not larger than A3)
The Ardara Tidy Towns Cup.
To be confined to the Ardara Parish
- Class 244: Photography any subject.
- Class 245: Tastiest Queen cakes – Decorated
- Class 246: Tastiest Queen cakes – Not Decorated
- Class 247: Tastiest White soda scones.
- Class 248: Best example of Needlework.
- Class 249: Best Hand Knit Scarf.
- Class 250: Best Collection of Wild Flowers.

OPEN TO EVERYONE UNDER 18 YEARS OF AGE

- Class 251: Best example of Craftwork
Sorcha Keane-Breslin Memorial Cup.

Ardara Show 2022

SPECIAL NEEDS SECTION

Prizes: Trophies/Plaques

Entry Fee: Free

Class 252: Drawing in Watercolour or Crayons, for children up to 10 Yrs.

Class 253: Drawing in Watercolour or Crayons, for children up to 15 Yrs.

Class 254: Any Article of Woodwork.
(Not exceeding 60cms X 60cms)

Class 255: Best Bunch of Wild Flowers.

Class 256: Any Painting (Adult Class).



DOG SHOW

Sponsored by Pedro Dog Food

A Fun dog Show will be held at 2pm. Entries will be taken from 1pm, and charges will be €3 for one class and €1 for additional classes. All dogs must be kept on leads, and any dogs showing aggressive behaviour will not be allowed in the ring.

NO DOGS ALLOWED NEAR LIVESTOCK RINGS DUE TO SAFETY REASONS

Classes for Non-Pedigree Dogs:

1. Any type bitch.
2. Any type dog.
3. Any type open. **Dulse & Carrageen Cup**

Classes for Non-Pedigree Dogs:

4. Any type terrier, toy or utility - **Woof & Wags Kennel Plaque**
5. Any type working, pastoral or sporting.
6. Any type hound.
7. Any type gun dog - **Dulse & Carrageen Cup**

Open Classes:

8. Best child handler (up to 15 years)
9. Best adult handler
10. Best veteran dog
11. Best Rescue Dog

Pedro Top Dog of Show (open to winners of classes 1-7)

Ardara Show 2022

MARQUEE ENTRY FORM

Ardara Show 2022

Ardara Agricultural Show

**ALL TROPHIES FROM THE 2019 SHOW
MUST BE RETURNED BY 24TH JULY 2022**

See special notices on trophies

MARQUEE ENTRY FORM		
Class	Description of Exhibit	Entry Fee

I enclose € Entry Fee(s)

Please print in BLOCK LETTERS and state whether Mr. Mrs. or Miss

Name:

Address:

.....

Date 2022

Phone no: in case we need to contact you.

I have read and agree to abide by the rules and regulations set out by the
Ardara Show Society and the Irish Shows Association.

Signed

ENTRIES TO

Tracey McGill, Ardara Show Office, Ardara, Co. Donegal.

Entries close on Sunday 24th July 2022

MARQUEE ENTRY FORM

Ardara Show 2022

MARQUEE ENTRY FORM

Ardara Show 2022

Ardara Agricultural Show

**ALL TROPHIES FROM THE 2019 SHOW
MUST BE RETURNED BY 24TH JULY 2022**

See special notices on trophies

MARQUEE ENTRY FORM		
Class	Description of Exhibit	Entry Fee

I enclose € Entry Fee(s)

Please print in BLOCK LETTERS and state whether Mr. Mrs. or Miss

Name:

Address:

.....

Date 2022

Phone no: in case we need to contact you.

I have read and agree to abide by the rules and regulations set out by the
Ardara Show Society and the Irish Shows Association.

Signed

ENTRIES TO

Tracey McGill, Ardara Show Office, Ardara, Co. Donegal.

Entries close on Sunday 24th July 2022

MARQUEE ENTRY FORM

Ardara Show 2022

NO SELLING OF
DANGEROUS
GOODS ON
TRADE STANDS



AFTERNOON PROGRAMME

- 2.00pm Fun Dog Show & Irish Guide Dogs
- Children's Sports & Entertainment
- Penalty Kick Competition

SPECIAL ATTRACTIONS INCLUDING

- Birds of Prey Demonstration
- Vintage Tractors Display

