



Cumann Taisbeantas Tortha Talmhaíochta agus Tionscail Iar-Dheisceart Thír  
Chonail Teo. (S.W. Donegal Agricultural & Industrial Show Ltd.)  
A member of the Irish Shows Association

# ARDARA SHOW

Saturday 12th August 2023

## PRIZE SCHEDULE

**MAIN SPONSOR**



**ARDARA DISTILLERY**  
THE HOME OF SLIABH LIAG DISTILLERS



**Closing Date for  
Entries is  
22nd July 2023**

**ALL ENQUIRES TO THE  
SHOW SECRETARY ON  
087 474 3826**

**ardarashow@gmail.com**

*More info on [www.ardara.ie](http://www.ardara.ie)*



**PLEASE ASSIST US BY GETTING YOUR ENTRIES IN EARLY**

**Trade stand space MUST be booked in advance**

# ARDARA SHOW 2023

---

*We are again delighted to welcome on board as our Main Sponsor for 2023*



**ARDARA DISTILLERY**  
THE HOME OF SLIABH LIAG DISTILLERS

It is very fitting that this great company is now built on what will always be known as The Show field which we also called home for many years.

**We have been very fortunate to have the facilities of Pearse Memorial Park, Home of the Ard an Ratha GAA Club and we are very thankful to all the committee for allowing us the use of Pearse Memorial Park on August 12th 2023.**

**SEE YOU ALL ON SHOW DAY!**



## Message from our **National President** **RAY BRADY**



I am delighted to have this opportunity as President of the Irish Shows Association in 2023 to address you. I have been involved in my local show in Arva, Co. Cavan from a young age and to have reached this point is both an honour and a privilege.

As President, with the support of the Board of the Irish Shows Association along with the Showing Community, I hope to bring about a few advancements.

These include,

- Growth of communication between our member shows and the Irish Shows Association.
- Deliver a biodiversity, sustainability and environmental awareness framework document.
- Embrace and engage the youth of our communities with our existing members.
- Enhance ,and expand a National Child Safeguarding Policy for all our shows.
- Create a culture of teamwork between different Shows to help with resources, ideas, manpower and facilities.

I want to acknowledge Minister Heather Humphreys and the Department of Rural and Community Development for the vital financial assistance. Minister Charlie McConalogue and the Department of Agriculture Food and the Marine also needs to be acknowledged for their contribution .Both these support schemes are appreciated greatly by the Board of ISA and all member shows.

I would like to thank the present and previous Board members for their dedication to the betterment of Agricultural Shows and events over many years. At this point, ISA National Secretary, Jim Harrison deserves a special mention for his diligence and hard work.

I am looking forward to attending Shows throughout the country in 2023 and meeting the people behind these shows - the organisers, the exhibitors, the sponsors, the stewards and the patrons who make our shows the incredible events they are.

There are close to 140 shows nationally each year. The amount of work that it takes to bring these shows to fruition each year is phenomenal. Each Show is unique and I encourage each person with an interest in our shows ,to be proud of your involvement and continue the hard work .

Lets hope that we have safe, enjoyable and memorable shows in 2023 and in the years ahead.

**Ray Brady**

*National President*

# Ardara Show 2023

## NOTICE

1. All animals must be in show field at least half an hour before judging of their section is due to commence.
2. New sponsors always welcome.
3. Trade stands must be booked in advance.
4. To avoid any confusion regarding perpetual trophies at this show please note that all trophies are perpetual and cannot be won outright.
5. All perpetual trophies must be returned to the show secretary in good condition at least four weeks before the date of show.

**DON'T MISS THE SHOW DANCE**

# **SHOW DANCE**

**LIVE AT THE MARQUEE WITH  
THE DUCK STREET JAM BAND**

**Ardara Show 2023**

## ACKNOWLEDGMENTS 2023



Department of Rural and  
Community Development



An Roinn Forbartha  
Tuaithe agus Pobail

The Irish Show Association would like to acknowledge the very generous grant made to 120 of our Shows by the Department for Rural & Community Development, and to thank Minister Heather Humphreys TD and Michael Ring TD for their great help. It will really make a great difference to the Shows many of which might not be able to run had they not received this funding.



Rialtas  
na hÉireann  
Government  
of Ireland

Tionscadal Éireann  
Project Ireland  
**2040**

The Irish Shows Association would like to acknowledge the Leader grant received for the ISA SuperShow Platform, an integrated show management IT system. The project is part-funded under the LEADER national co-operation programme, which is supported by the Department of Rural and Community Development and the Department of Agriculture as part of Project Ireland 2040.

The project is being led out by Monaghan Integrated Development CLG in partnership with Avondhu Blackwater Partnership CLG, Galway Rural Development CLG and South-west Mayo Development Company CLG.

This system will attract people to administrative positions due to the significant time and paperwork involved. Recognising the need to future-proof their shows, the ISA set about seeking this funding to develop a cloud-based show management system to reduce the administrative burden on the agricultural show volunteers.



Department of  
**Agriculture,  
Food and the Marine**

An Roinn  
**Talmhaíochta,  
Bia agus Mara**

The Irish Show Association would like to acknowledge the grant from the Department of Agriculture Food and the Marine towards Insurance rebate. It does really make a great difference to our hard pressed Shows.

## ACKNOWLEDGMENTS 2023



The Irish Show Association would like to acknowledge and thank FBD for the very generous grant they make available to us each year. We use the grant to promote safety at all our shows and provide High Visibility Vests to our Shows as well as holding Safety Seminars in our five Regions



The Irish Farmers Journal and FBD have made available sponsorship and advertisement for our brand new Young Stock Person Championship. The Irish Shows Association would like to acknowledge this on behalf of our shows.

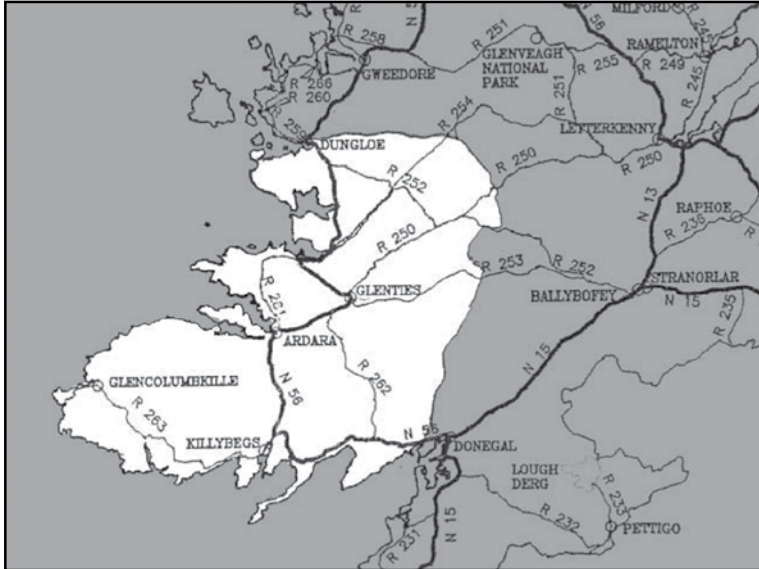


The Irish Show Association would like to thank and acknowledge the funding from Horse Sport Ireland over many years it is greatly appreciated by the Irish Show Association and all the Loyal Equine Breeders who avail of it and support our Shows.

We also want to thank all the other very generous firms & individuals who sponsor all our competitions and indeed our member Shows around the country year in year out. Without this support our Shows would not be able to continue in business.

# Ardara Show 2023

## Show Area Map (Confined Area)



## RULES & REGULATIONS

### SHOW AREA DEFINED:

**“South-West Donegal:”** the name of this Agricultural Show means the area included in the Parishes of Ardara, Glenties, Upper Rosses, Inver, Killybegs (Killaghtee), Kilcar and Glencolumbkille

1. Competition is Open except where defined as above or confined to Ardara Parish
2. CONFINED CATTLE EXHIBITS must be the property of the exhibitor for at least six months before date of Show.
3. Exhibits in the Farm and Garden Produce, Industrial Sections, must have been grown by the exhibitor
4. The Show Secretary, acting through her officers, may refuse an entry without assigning any reason.

5. The Show Executive while cataloguing the exhibits will not accept liability for any error in the numbering of the exhibits, for any exhibit not being properly displayed, or for loss of, accident or damage to an exhibit.
6. The judges may withhold a prize in any class in which in their opinion, there is not sufficient merit. The judges' decision to "merit" will be final.
7. All trophies are perpetual unless otherwise specified and cannot be won outright.
8. Entry Fee must be paid when entering. All entries must be received on or before the closing date. No late entries accepted.
9. In the case of only one exhibit in a Class, the Judge may award a 1st prize if in his/her opinion the quality is high enough, otherwise a merit may be awarded.
10. In Classes where there are ten or more entries the Judges may award an additional prize, if exhibits in their opinion warrant such an award; 4th prize is equal to 3rd prize.
11. Animals for exhibition at the Show must be in the Show Grounds at least 30 minutes before judging commences in their section, must be haltered and trained to the lead.
12. No exhibit will be removed from the Show Grounds without permission from the Chief Steward whose name will appear in the Show Catalogue.
13. Any statement re ownership wrongly and intentionally made in the Entry Form (in the opinion of the Executive Committee) automatically disqualifies the exhibitor.
14. All prizes must be claimed on the day of Show.
15. As judging starts in the marquee at 10 am, all exhibits must be in the marquee before 9.30 am, on date of Show.



16. The Show Society reserves the right to postpone the Show or part thereof, definitely or indefinitely, without incurring any liability to any exhibitor or other party exhibitor or other party.
17. N.B. – Prize-winning exhibits at previous Shows in Ardara will not be eligible for any of the Competitions in the Industrial Section and must not be entered.
18. Exhibits not to be removed from the marquee before 5pm.
19. Only entries accepted by the Secretary are eligible for judging.
20. New members shall not be entitled to vote until the meeting following acceptance of membership.
21. No entry will be accepted from anyone who fails to return trophies on time.
22. In accordance with Irish Shows Association Rule 5% of the prize money must be deducted in all cattle, horse and sheep classes and forwarded to them, to help defray their costs.
23. Exhibitors are required to pay admission charge. If your entry fee is €80 or more you will receive 2 Show field passes.
24. Any person who interfered in any way with a judge will forfeit any prizes he/she may have won in any section of the Show, and will be barred from entering or exhibiting at Ardara Show for a period that will be determined by the Executive Committee.
25. Any Entry not in place by the stated time will not be judged.
26. The general public will not be permitted in the Marquee during judging.
27. During judging stewards will not accompany judges in sections where they have entries.
28. Shows and competitors must contact the I.S.A. for all details and information concerning these Championships and not the sponsor.

29. The committee reserves the right to cancel a class based on insufficient numbers, if this happens all entry money will be returned.
30. Any objections or complaints must be lodged in writing with the I.S.A. representative at the show and the Show Secretary within half an hour following the completion of the competition, together with €50 or other stated fee which is refundable in the event of the objection being upheld.
31. All cattle are strictly commercial unless otherwise stated.
32. No Calves allowed in the No Permanent Teeth Section.
33. All exhibitors are responsible for their own entries and ensuring they are entered in their proper class.
34. The show society retains the right to adjust any classes as they see fit on the day of the show.
35. If there are insufficient entries in any classes, the classes may be amalgamated. This will be on a case-by-case basis

*For the efficient running of the championships all concerned are requested to read and observe the Rules set out below.*

## **GENERAL RULES FOR IRISH SHOWS ASSOCIATION CHAMPIONSHIPS 2023**

### **A. ELIGIBILITY OF SHOWS**

Shows wishing to participate in the 2022 Championships and be eligible to hold qualifiers must have collected the Championship Fund Levy (currently 5%) from Horse, Pony, Cattle and Sheep class prize money for the year 2019 and forwarded the amount so collected, in full, to the Irish Shows Association Head Office within the stipulated period of not more than **30 days** from the date of their show.

Alternative methods of meeting this obligation are not acceptable.

Any show or competitor in breach of the Rules set out below will be disqualified from participating or competing in these championships.

*These General Rules and those relating to individual championships (where applicable) should be published in the show schedule and catalogue of the participating shows and must be strictly observed.*

### **B. SHOWS HOLDING QUALIFIERS**

Qualifying rounds will take place at eligible shows selected by the Irish Shows Association.

### **C. RESPONSIBILITY OF SHOWS HOLDING QUALIFYING ROUNDS**

1. Selected shows **Must** hold a separate class for each qualifier from which the highest placed animals will qualify.

2. The qualifier class if possible should be held as the **first** class in the relevant section of the show.

3. Shows must ensure that the qualifiers are held strictly in accordance with the relevant rules.

4. No other sponsor may be involved in qualifiers **“No Prize-money to be paid to qualifiers”**.

5. Shows may charge an entrance fee for each qualifying class. *The I.S.A. will award a rosette to successful Qualifiers on appearance at the Finals.*

6. A show hosting a Championship Final may not hold a qualifier for that Championship on the day of the Final other than by agreement with the Irish Shows Association. **However**, Shows who hold qualifiers for **Horses, Ponies & Cattle** may ask exhibitors to enter the exhibit in **at least one other class** at their show.

7. Animals qualified for Finals are **not** eligible to enter in any other class at the Show where the Final is held (**other than a Qualifying Class for another Competition**).

8. Shows **should** appoint competent persons to act as Stewards, who must ensure that only animals (or other exhibits) which are eligible to compete and those whose documentation is in order are allowed to proceed to the judging ring.
9. Animal Passports & “Micro Chips where applicable” **should** be read by a Veterinary Surgeon appointed by the show.
10. **On completion of judging, Stewards should instruct the successful competitors to attend at the Show Secretary’s Office within one hour** and to complete the necessary documentation for entry to the championship final.
11. The show Should appoint a well-briefed officer, who will be in attendance at the Secretary’s Office, and who will assist exhibitors to complete the necessary documentation for participation in the final and to collect the relevant entrance fee.
12. **Show Secretaries must forward completed result cards, together with appropriate fees to the Irish Shows Association within three (3) days following the holding of the show.** *N.B Shows must return results card marked “No Competition” for any or all of the events for which no animal (or exhibit) has been selected.*

#### **D: RESPONSIBILITY OF EXHIBITORS**

##### **1. Exhibitors accept that the Judges decision is final in all cause.**

Any abuse of Judges will not be tolerated. Where a dispute or case for complaint arises the matter should only be dealt with under 6. Below.

**2. Winners of qualifiers are themselves responsible for entering their animals (or exhibits) for the final in accordance with 10 and 11 above, within one hour of qualifying.**

**3. Winners of qualifiers will compete in the final.**

**4. The Irish Shows Association in conjunction with the sponsor reserve the right to alter or amend the rules of any competition as may be necessary or appropriate.**

**5. Shows and competitors must contact the Irish Shows National Office for details of any championships and **not** the sponsor involved.**

**6. Objections must be lodged in writing with the Show Secretary or with the I.S.A representative at the show within half an hour of the completion of judging, together with a fee of €50 or other stated fee, which is refundable in the event of the objection being upheld.**

**7. Any Exhibitor who makes a false declaration or misrepresents a fact regarding themselves or their exhibit is liable to disqualification and or forfeiture of any prizes awarded.**

**It is in the interest of Shows hosting championship Finals that photographs and results are forwarded to the Irish Farmers Journal or other papers immediately following Judging.**

#### **E. RESPONSIBILITIES OF SHOWS HOSTING CHAMPIONSHIP FINALS**

1. A deduction of 5% of the prize money is to be collected by the Show and forwarded to the Irish Shows Association within **30 Days of the final**.
2. Championship finals should start **not later than 2 pm on the day of the show** & the advertised time of starting **Should** be adhered to as far as practicable, if necessary, other show classes should be either postponed or relocated to allow this.

#### **NOTICES OF INTEREST TO CHAMPIONSHIP PARTICIPANTS IRISH LAW (EU DIRECTIVE)**

Under Irish Law all horses moving from one location to another must be accompanied by their passports. It is in your own interest to ensure this is the case. Failure to do so is an offence under Irish Law and is liable on summary conviction to result in a fine up to €3000. All passports must be registered with the name of the current owner.

**Embryo Transfer:** Where a foal is produced by this method the dams passport must bear a declaration dated, stamped and signed by the stallion owner (or accredited practitioner where AI is involved) stating the date on which the dam was last covered (or inseminated) and the name of the covering stallion.

# ***The Annual General Meeting and Dinner Dance***

**AGM: 2pm**

**Dinner Dance: 7.30pm**



***Saturday 25<sup>th</sup>  
November 2023***

***Hotel Minella  
Clonmel, Co. Tipperary***

**Ardara Show 2023**



Department of  
**Agriculture,  
Food and the Marine**

An Roinn  
**Talmhaíochta,  
Bia agus Mara**

### SPECIFIC REQUIREMENTS

## HORSES AND OTHER EQUINES

### Premises Registration

As from 1 May 2012, any premises (**which includes shows, fairs and markets**) where horses or other equines are gathered must be registered with the Department.

Owners/persons in charge of such gatherings are required to submit a completed application form for registration and to keep records of movements on/off their premises. **(This rule does not apply in Northern Ireland)**

*Records must be retained for at least 3 years as they may be required by the Department for the purposes of tracing disease.*

### Records required are:

- The name and address of the owner/person in charge of the premises from which the equine came.
- Premises registration number from which the equine came
- Passport number/UEL number of the animal

It is important therefore that Show organisers should contact their local District Veterinary Office in advance so that consideration can be given to compliance with the requirements outlined above.

Any further information on the requirements for moving horses and equines to shows will be provided on the Department's website at:

<http://www.agriculture.gov.ie/animalhealthwelfare/animalidentificationmovement>

Department of Agriculture, Food and the Marine

### IMPORTANT NOTICE

**Horse-riding is a dangerous sport and all competitors in Ridden Classes are strongly advised, for their own safety, to wear appropriate head gear that complies with up to date safety standards.**

## DISCIPLINE

The Irish Shows Association expects and will insist upon appropriate behaviour from all Exhibitors and others participating in any of the activities at our Member Shows and will not tolerate inappropriate behaviour.

**Inappropriate behaviour** shall include but not be limited to the following:

- Profanity, coarse or vulgar language or gestures towards judges or other Show officials.
- Harassment or bullying, including using words or actions that threaten, intimidate or undermine judges or other officials before, during or following Member Show activities.
- Failure to follow rules and/or obey instructions.
- Abusing any animal.

### **Disciplinary Procedures:**

Complaints of misconduct against an Exhibitor or other participant at a Member Show shall be investigated and adjudicated upon by a subcommittee appointed by the Irish Shows Association. The said subcommittee shall consist of three members of the board of the Irish Shows Association and shall be known as the Disciplinary Committee. The Disciplinary Committee shall seek to ensure the existence of consistent, effective, fair and transparent complaint procedures and shall act in accordance with natural and constitutional justice.

### **Procedure:**

A complaint of misconduct/inappropriate behaviour against an Exhibitor or other participant in a Member Show shall be made in writing and delivered to the Secretary of the relevant Member Show within 72 hours.

A copy of the complaint shall be sent by the Secretary of the Member Show to the National Secretary of the ISA. A copy of the complaint will be sent by the National Secretary to the person or persons against whom the complaint is made. A person or persons against whom a written complaint is made shall have a period of 14 working days from the date of receipt of the claim to reply to the said complaint; such reply shall be made in writing.

Both parties shall state whether an oral hearing of the complaint is sought. The Disciplinary Committee shall be entitled to hold an oral hearing in regard to the complaint whether or not sought.

The Disciplinary Committee shall decide in each case whether to hold such an oral hearing in respect of the complaint, or any part thereof and there shall be no appeal from such decision of the Disciplinary Committee.

The Disciplinary Committee shall, at any time, seek further information from either party. In the event of either party refusing or failing to provide such further information within the time specified by the Disciplinary Committee, the Committee shall be entitled to make a decision on the complaint and/or to hold an oral hearing of the complaint in the absence of a copy of such further information being received by the Disciplinary Committee from either party.

The Disciplinary Committee shall be entitled to reject a complaint where, in the opinion of the Committee, it finds there is no basis for it.

### **Sanctions**

In the event of a first incident of inappropriate/unacceptable behaviour being deemed to be proved against the offender, the Disciplinary Committee shall issue a written warning to the offender. In the event of any subsequent incident, the Disciplinary Committee shall be entitled to impose sanctions on the offender, including a prohibition on such offender participating in any of the events/activities at any Member Show of the ISA, provided always that in the event of a first incident of inappropriate/unacceptable behaviour being deemed by the Disciplinary Committee to constitute gross misbehaviour.

The Disciplinary Committee shall be entitled to impose such sanctions on the offender as it deems appropriate, including the prohibition on such offender from participating in any of the events/activities of any Member Show of the ISA.

The decision of the Disciplinary Committee shall be final.

## **Important Notice to Animal Owners involved in showing Animals at Shows**

The Irish Shows Association would advise all Animal owners who have their Animals Insured to have the Insurance cover extended to cover them while showing Animals at Shows, it may cost very little or nothing at all depending on who you have Insurance with.

The reason for giving this advice is that if your animal were to injure someone or damage someone's property, and it is established that your animal was out of your control at that time, you may be held responsible or partly responsible for any injury or damage caused, and could end up paying all, or part of any Court Award or settlement reached.



## PONIES (OPEN)

Prizes: €50, €30, €20

Entry Fee: €8

Judging Commences 10 a.m.

*Ponies will be judged first followed by horses. All foals must be led.*

Class 1: Registered Connemara Brood Mare

**Conal Watters Memorial Cup**

Class 2: Ponies at or under 128cm

Class 3: Ponies exceeding 128cm, not exceeding 138cm

Class 4: Ponies exceeding 138cm, not exceeding 148cm

**Colm Breslin Cup**

Class 5: Mare under 148cm, with foal at foot

**Billy Boyd Cup**

Class 6: Ponies up to 148cm confined to Ardara Parish

Special Sash for best turned-out Handler

**Shaun Molloy Perpetual Cup**

Class 7: Champion Pony Foal, Colt or filly

**Hugh Gildea Memorial Cup**

Class 8: Welsh Pony Pure Bred (Must be registered with WPCS)

**NWIAWPCS Perpetual Cup**

Class 9: Welsh Pony Part Bred (Must be registered with WPCS)

**CHAMPION PONY OF SHOW** excluding Class 6

***Special Sash***

**WOODHILL HOUSE CUP**

**Ardara Show 2023**

## HORSES (OPEN)

Prizes: €50, €30, €20

Entry Fee: €8

*Judging Commences after pony judging has concluded.*

Class 10: Best Friesian Horse, Any Age

Class 11: Mare or Gelding, any age agricultural type

Class 12: Brood Mare with Foal at Foot  
Special Sash for Best Foal on Show  
**Con Gillespie Memorial Cup**

Class 13: Mare or Gelding, 3 years or over likely to make Heavy Hunter  
**Castlegolan Cup**

Class 14: Mare or Gelding, 3 years or over likely to make Light Hunter

Class 15: Best-Coloured Horse/Pony shown in Hand

Class 16: Registered Irish draught Mare or Gelding 3 years and under  
**Michael Kennedy Cup**

Class 17: Registered Irish Draught Mare or Gelding 3 years and over,

Class 18: Best working Cob

**CHAMPION HORSE OF SHOW**  
**Hugh Byrne Memorial Cup & Sash**

**RESERVE CHAMPION HORSE OF SHOW**  
**Sylvester Mulhern Memorial Shield**



## Note for Information regarding Movement of Bovine to Shows

The Department of Agriculture implemented a number of changes on 4<sup>th</sup> February 2019 which changed the procedures and criteria applicable when applying for a Certificate of Compliance for the movement of cattle. These also impact on the certificate which is required when moving bovine to a Show.

The following sets out the criteria applicable:

- The movement of cattle to and from an Agriculture Show within the State must be recorded on the Animal Identification and Movement System (AIM).
- In line with these changes a specific certificates of Compliance for the “Movement of Bovine from a Single Holding to a Show” must now be requested prior to the movement of animals concerned.
- These certificates can be created by (i) applying on-line using their agfood account or (ii) where the keeper is not on line the certificate can be generated by the local Regional Veterinary Office following receipt of a NBAS31K with issue of the certificate being subject to normal criteria applicable. This form will be available on the Department’s Website and will also be included with the Show Circular when issued.
- When applying for this certificate the destination herd / or Show number is not required. The certificate generated will include an “S” symbol.
- **The Certificate of Compliance for a Show will continue to be valid for a period of up to 30 days.** As is currently the case these can be used for the movement of animals to a number of shows during the validity period of the certificate.
- **Please also note—Calves which are less than 10 days cannot be moved to a Show.**

As is currently the case the Movement Notification Section of the Certificate should be Completed by the Keeper and the Show Secretary who must clearly indicate the Show Number. The Show movement should be recorded on the passport. Ultimate responsibility for fulfilling these requirements lies with the Show Secretary. If the animals move to a herd other than the source herd, the new destination herd must complete and sign the certificate also.

***Completed forms should be sent by the Show Secretary to the local RVO within 7 days of the Show.***

**Animal Identification and Movement (AIM) Division,  
Department of Agriculture, Food and the Marine.**

**\*\*\* Irish Shows Association Notice \*\*\***

**Department of Agriculture, Food and the Marine  
Certificate of Compliance Requirements**

On the day of the Show, the Certificate of Compliance should be presented to the Show Secretary.

The keeper and the Show Secretary will then sign the Movement.

Notification section of the Certificate which will then **Must** be sent to the local RVO for recording onto the AIM system.

**Important Notice**

The (name of show) Committee, acting by itself or through its Agents/Officers, reserves the right to reject or cancel any entry or entries made by or on behalf of any person, corporate or other entity and may direct the removal of any animal or other exhibit from the showing ring or display area and/or from the Showgrounds, if the Committee and/or its Agents/Officers shall deem it fit to do so, without offering any explanation or reason for so doing and without incurring any liability whatsoever to any such Applicant/Exhibitor or his/her/its Agent.

**Department of Agriculture, Food and the Marine**

It is vitally important that all Show Secretaries comply with the rule & make sure to send back the **Certificate of Compliance** to your Local RVO Office within Seven Days of your Show taking place as failure to do so is causing untold problems to exhibitors.

**After submissions from affiliated Shows on Judging of Calves & the need judged them by weight rather than by age at Shows**

The Irish Shows Association Cattle Sub Committee have put forward the following **recommendation** on use of live weight for calf classes e.g. **Calves under 12 months not to exceed 460 kg (Autumn born calves and Calves under 6 months) it recommends that the weight should not exceed 320kg**

Another suggestion is to use no more than **1.7kg** live weight gain per day from the birth date to the show date.

This proposal would also be suitable for interbreed pedigree calf Championships.

## CATTLE (CONFINED)

Prizes: €60, €40, €20

Entry Fee: € 8

*Cattle judging commences at 10.00 a.m.*

### **ALL CALVES MUST BE EXHIBITOR BRED**

**No Calves allowed in the No Permanent Teeth Section.**

Class 19: Beef Type Heifer showing no permanent teeth.

Not eligible for entry in class 20.

*Sponsored by The Miltown Bar.*

**Robert Smyth Cup**

Class 20: Best Breeding Heifer showing no permanent teeth.

*1st Prize - Sponsored by Pearse McNamee, Dovea Genetics.*

**Ardara Rowing Cup**

Class 21: Best Breeding Heifer showing 2 or more permanent teeth.

*1st Prize - Sponsored by Pearse McNamee, Dovea Genetics.*

### **Class 20 & Class 21 not eligible for entry in Class 22 or Class 23**

Class 22: Beef Type Cow or Heifer other than Charolais in Milk or in Calf.

**Harold Hennigan Cup**

Class 23: Charolais Type Cow or Heifer in Milk or in Calf.

**Dean Boyce Cup.**

Class 24: Suckling Cow with own Calf at Foot, Male Calf not exceeding 400kg, female Calf not exceeding 360kg.

**Hamilton Baskin Cup**

*1st Prize - Feed Voucher Sponsored by R Smyth & Sons Ltd.*

Class 25: Charolais Bull Calf, not exceeding 400kg.

**Neil Craig Memorial Cup**

*1st Prize - Feed Voucher Sponsored by R Smyth & Sons Ltd.*

Class 26: Charolais Heifer Calf, not exceeding 360kg.

**Billy Mc Nelis Memorial Cup**

*1st Prize- Feed Voucher Sponsored by R Smyth & Sons Ltd.*

- Class 27: Best Limousin Calf Male, not exceeding 400kg.  
**Dinny Mc Ginley Cup**  
*1st Prize-Feed Voucher Sponsored by R Smyth & Sons Ltd.*
- Class 28: Best Limousin Calf Female, not exceeding 360kg.  
**John Sharpe Memorial Cup**  
*1st Prize- Feed Voucher Sponsored by R Smyth & Sons Ltd*
- Class 29: Best Belgian Blue Calf Male or Female, Male calf weighing between 251kg to 400kg, Female calf weighing between 251kg to 360kg.  
**Thomas Boyle Memorial Cup**  
*1st Prize- Feed Voucher Sponsored by R Smyth & Sons Ltd.*
- Class 30: Best Belgian Blue Calf Male, weighing 250kg or under  
**Mary Cunningham Memorial Cup**  
*1st Prize – Feed Voucher sponsored by R Smyths & Sons Ltd*
- Class 31: Best Belgian Blue Calf Female weighing 250kg or under  
**Sean Gallagher Memorial Cup**  
*1st Prize - Feed Voucher Sponsored by R Smyth & Sons Ltd.*
- Class 32: Best Homebred Animal excluding Calves and Pedigrees  
**Ciaran Gallagher Haulage Cup**  
*Sponsored by Pod-Trak Ltd.*
- Class 33: Best Pair of Animals from one herd, any age, any breed, excluding Pedigree.  
**Francie McCafferty Cup**  
*Sponsored by Pod-Trak Ltd.*

## CHAMPION & RESERVE CALF OF CONFINED CLASSES John Gallagher Cup

## CHAMPION & RESERVE ANIMAL OF CONFINED CLASSES Wee Stephen Memorial Cup

**Champion Prize:** €80 Voucher from Elite Pedigree Genetics

**Reserve Prize Money:** €50 sponsored by Barry Doogan AI Services

## CATTLE (OPEN)

Prizes: €60, €40, €20

Entry Fee: € 8

Class 34: Best Breeding Heifer showing no more than 2 permanent teeth.

Class 35: Best Non-Pedigree Male Calf, weighing between 251kg to 400kg.

*Sponsored by: Gerry Lenehan - Progressive Genetics*

Class 36:

**PRIZE FUND €500**

**Entry Fee €10**

SPONSORED BY: Mobile Weighing Services

Best Non-Pedigree Female Calf weighing between 251kg - 380kg

**PRIZE FUND: 1st Prize: €250 2nd Prize: €150 3rd Prize: €100**

Class 37: Best Non-Pedigree Male or Female Calf not exceeding 250kg

Class 38:



THE IRISH SHOWS ASSOCIATION AND THE  
DEPARTMENT OF AGRICULTURE PRESENTS

**THE BREEDER'S CHOICE  
TRADITIONAL 4\* OR 5\*  
BREEDING HEIFER**

SPONSORED BY THE DEPARTMENT OF AGRICULTURE

**RULES AND CONDITIONS**

**PRIZE FUND €750**

1. This competition is open to All Traditional Genotype 4\* or 5\* Breeding Heifers, suitable to make a Suckler Cow.
2. Full tag number must be submitted with entry to ensure that genotype rating can be verified.
3. Heifers may be in calf or maiden. All Heifers must be between 12 months and 24 months of age on the date of the show.
4. Each Heifer can only enter this competition at up to five shows. If a heifer enters more than five shows, any further prizemoney will be forfeited.
5. All Heifers must be halter-trained and led by a competent adult.
6. The foregoing rules should be read in conjunction with ISA General Rules.

**Entry Fee: €15**

**PRIZE FUND: 1st Prize: €250, 2nd Prize: €125, 3rd Prize: €75, 4th-8th Prize: €50**

## COMMERCIAL CHAMPION & RESERVE

*Sponsored by Seamus Nagle, Bull Bank, Co. Clare*

Champion Prize: €100 Voucher / Reserve Prize: €50 Voucher

## PEDIGREE CHAROLAIS SECTION

Prizes: €60, €40, €20

Entry Fee: € 8

- Class 39: Pedigree Charolais Male Calf born from 1st September 2022 to 31st December 2022
- Class 40: Pedigree Charolais Female Calf born from 1st September 2022 to 31st December 2022
- Class 41: Pedigree Charolais Male Calf born from 1st January 2023
- Class 42: Pedigree Charolais Female Calf born from 1st January 2023
- Class 43: Pedigree Charolais Cow or Heifer born on or before 31st August 2022

## OVERALL CHAROLAIS CHAMPION & RESERVE

(Classes 39 - 43)

*Sponsored by Dawros Bay Hotel*

Champion Prize: €100 / Reserve Prize: €50



## Department of Agriculture, Food and the Marine SPECIFIC REQUIREMENTS – SHEEP

### IDENTIFICATION

All sheep must be identified individually with appropriate ear tags issued in accordance with the requirements of the National Sheep Identification System (NSIS).

### MOVEMENT DOCUMENTATION

All consignments of sheep being moved must be accompanied by a completed dispatch document. Individual details of each sheep in the consignment must be recorded on the document. Sheep from non-restricted flocks only can be moved to shows. In the case of flocks restricted following diagnosis of scrapie, sheep possessing the ARR/ARR genotype only may be exhibited. The movement of these ARR/ARR genotype sheep must be accompanied by the relevant movement permit (SCR/10), which can be obtained from the local District Veterinary Office in the county where the flock is located.

### AIM NOTIFICATION

The movement of sheep to and from an Agricultural Show within the State must be recorded on AIM. This is done using a copy of the owners sheep dispatch document as follows:

1. The owner/keeper presents the signed and completed dispatch document to the show secretary who checks it to ensure that it is completed in full.
2. The show secretary fills in the MART section of the dispatch document with (i) the show number, (ii) the date of the move back to the source holding (iii) stamps it with the show stamp and (iv) signs the dispatch document.
3. The show secretary then forwards the completed pink section of the dispatch document to the local DVO within 7 days of the show movement.
4. The show secretary keeps white copy for his/her records.
5. The source/destination keeper keeps the bottom yellow copy to enter it into their flock register. Ultimate responsibility for fulfilling this requirement lies with the Show Secretary.

### FLOCK REGISTER

All movements of sheep to and from shows must be recorded in the keeper's flock register.

### EXPORTS TO NORTHERN IRELAND

All sheep must be accompanied by a TRACES intra-community trade certificate for ovine animals. A TRACES message, corresponding with the TRACES certificate, will be sent for each animal or consignment being dispatched to the show (this will be performed by Department officials of the DVO). Exhibitors are advised to contact the show society in Northern Ireland well in advance of any show to determine the suitability of the show for return of animals (e.g. premises and sheep status), and whether the authorities will have officials and veterinary staff present to supervise and process documentation for animals returning to origin.

*Further information on our Website: [www.irishshows.org](http://www.irishshows.org)*

## SHEEP (OPEN)

Dyeing of sheep allowed in Open Classes & Confined Classes  
Judging commences at 11.00 a.m.

Class 44: THE IRISH SHOWS ASSOCIATION PRESENTS:

### THE ECTOFLY EWE LAMB SCOTCH BLACK FACE EWE LAMB FINAL

*Sponsored by Midlands Veterinary Ltd*

#### RULES & REGULATIONS

1. Entry is confined to a pair of Ewe Lambs, which will be judged as a pair.
2. All classes are open to pedigree and non-pedigree flocks.
3. A competitor may enter two pairs of Ewe Lambs from his or her flock.
4. Entries to be made direct to the Secretary of the show.

**ENTRY FEE: €10 PER PAIR OF EWE LAMBS.**

#### **PRIZES FUND**

Champion Pair:	5 Ltr of Ectofly, €50 & Trophy
Second:	5 Ltr of Ectofly
Third:	2.5 Ltr of Ectofly
Fourth:	2.5 Ltr of Ectofly

## **SHEEP (OPEN)**

**Dyeing of sheep allowed in Open Classes & Confined Classes**

**Prizes: €50, €30, €20**

**Entry Fee: € 6**

### **BLACKFACE SECTION**

Class 45: Best Blackfaced Ewe Lamb

Class 46: Best Blackfaced Ewe, 1 year old

Class 47: Best Blackfaced 1 Crop Ewe rearing a lamb

Class 48: Best Blackfaced Ewe, 2 years and over

Class 49: Best Blackfaced Ram Lamb

Class 50: Best Blackfaced Ram, 1 year old

Class 51: Best Blackfaced Ram, 2 Years and Over

Class 52: Blackfaced Group Class. Best group of 3 only and one animal from any one Blackfaced Class, to be shown in group.

### **CROSSBRED SECTION**

Class 53: Best Cross-Bred Ewe Lamb

Class 54: Best Cross-Bred Ewe, 1 year old

Class 55: Best Cross-Bred Ewe, 2 years, or over

Class 56: Best Cross-Bred Factory Lamb, 45kg and under  
(If overweight, lamb will be shown in Butchers Class)

Class 57: Best Butchers Lamb, 46kg and over

Class 58: Best Stock Ram excluding Blackfaced

Class 59: Best Rare Breed

(If Class is large it will be split at the Discretion of Chief Steward/Secretary)

## **LANARK SECTION**

Class 60: Best Lanark Ewe Lamb

Class 61: Best Lanark Ewe, 1 year old

Class 62: Best Lanark Ewe, 2 years or over

Class 63: Best Lanark Ram Lamb

Class 64: Best Lanark Ram, 1 year & over

## **SWALEDALE SECTION**

Class 65: Best Swaledale Ewe lamb

Class 66: Best Swaledale Ewe, 1 year old

Class 67: Best Swaledale Ewe, 2 years or over

Class 68: Best Swaledale Ram Lamb

Class 69: Best Swaledale Ram, 1 year old

Class 70: Best Swaledale Ram, 2 year & Over

## **PEDIGREES SECTION**

Class 71: Best Pedigree Ram Lamb

Class 72: Best Pedigree Ewe Lamb

Class 73: Best Pedigree Ewe, 1 year old

Class 74: Best Pedigree Ewe, 2 year & Over

**Champion Sheep of Open Blackfaced Classes**  
*Special Rosette*

**Champion Sheep of Open Cross-Bred Classes**  
*Special Rosette*

**Champion Sheep of Open Lanark Classes**  
*Special Rosette*

**Champion Sheep of Open Swaledale classes**  
*Special Rosette*

**Champion Sheep of Open Pedigrees Classes**  
*Special Rosette*

# HORSE & PONY ENTRY FORM

Ardara Show 2023



# CATTLE ENTRY FORM

Ardara Show 2023

# Ardara Agricultural Show

**ALL TROPHIES FROM THE 2019 SHOW  
MUST BE RETURNED BY 22ND JULY 2023**

*See special notices on trophies*

<b>CATTLE ENTRY FORM</b>				
Class	Description of Animal	Age	Tag No.	Entry Fee

CATTLE ENTRY FORM

I enclose € ..... Entry Fee(s)

Please print in **BLOCK LETTERS** and state whether Mr. Mrs. or Miss

Name: .....

Address: .....

.....

Date ..... 2023

Phone no: ..... in case we need to contact you.

I have read and agree to abide by the rules and regulations set out by the Ardara Show Society and the Irish Shows Association.

Signed .....

**ENTRIES TO**

**Tracey McGill, Ardara Show Office, Ardara, Co. Donegal.**

**Entries close on Saturday 22nd July 2023**

Ardara Show 2023



# SHEEP ENTRY FORM

Ardara Show 2023

# Ardara Agricultural Show

**ALL TROPHIES FROM THE 2019 SHOW  
MUST BE RETURNED BY 22ND JULY 2023**

*See special notices on trophies*

<b>SHEEP ENTRY FORM</b>		
Class	Description of Exhibit	Entry Fee

SHEEP ENTRY FORM

I enclose € ..... Entry Fee(s)

Please print in BLOCK LETTERS and state whether Mr. Mrs. or Miss

Name: .....

Address: .....

.....

Date ..... 2023

Phone no: ..... in case we need to contact you.

I have read and agree to abide by the rules and regulations set out by the Ardara Show Society and the Irish Shows Association.

Signed .....

**ENTRIES TO  
Tracey McGill, Ardara Show Office, Ardara, Co. Donegal.**

**Entries close on Saturday 22nd July 2023**

# Ardara Show 2023

# MARQUEE ENTRY FORM

Additional Marquee Entry Forms on page 55 - 60

# Ardara Agricultural Show

**ALL TROPHIES FROM THE 2019 SHOW  
MUST BE RETURNED BY 22ND JULY 2023**

*See special notices on trophies*

<b>MARQUEE ENTRY FORM</b>		
Class	Description of Exhibit	Entry Fee

MARQUEE ENTRY FORM

I enclose € ..... Entry Fee(s)  
 Please print in BLOCK LETTERS and state whether Mr. Mrs. or Miss  
 Name: .....  
 Address: .....  
 .....  
 Date ..... 2023  
 Phone no: ..... in case we need to contact you.  
 I have read and agree to abide by the rules and regulations set out by the  
 Ardara Show Society and the Irish Shows Association.  
 Signed .....

**ENTRIES TO**  
**Tracey McGill, Ardara Show Office, Ardara, Co. Donegal.**  
**Entries close on Saturday 22nd July 2023**

# Ardara Show 2023

## **SHEEP (Confined)**

**Dyeing of sheep allowed in Confined Classes**

*(Confined to Show Area)*

**Prizes: €40, €25, €15**

**Entry Fee: €6**

### **BLACKFACE SECTION**

Class 75: One Blackfaced Ewe Lamb

**Pauric Breslin Memorial Cup**

Class 76: One Blackfaced Ewe, 1 year old

Class 77: One Blackfaced Ewe, 2 year or over

Class 78: One Blackfaced Ram Lamb

Class 79: One Blackfaced Ram, 1 year old

Class 80: One Blackfaced Ram, 2 years & Over

### **CROSSBRED SECTION**

Class 81: One Crossbred Ewe Lamb not exceeding 45kg

Class 82: One Crossbred Ewe Lamb exceeding 46kg

Class 83: One Crossbred Ewe, 1 year old

Class 84: One Crossbred Ewe, 2 year or over

Class 85: One Best Factory Lamb under 45kg

Class 86: One Best Butchers Lamb over 46kg

### **Champion Sheep of Confined Blackfaced classes**

*Danny and Philip Shovlin Memorial Cup*

*Special Rosette*

### **Champion Sheep of Confined Cross-Bred Classes**

*John Mc Nelis, Mac Plant Hire Perpetual Cup*

*Special Rosette*

## \*NOVICE SECTION\*

*Open to all young Sheep Farmers that is new to Sheep Farming.*

*Young Adults over 12 years and Under 18 years only allowed to enter.*



**Class 87:** Best Ewe Lamb

**Class 88:** Best Ram Lamb

# Champion SHEEP Young Handler Male or Female

(Judged on Stockmanship / Style and Appearance)

Class 1000 Under 11 years old

Class 2000 12 years old to 16 years old

1st, 2nd and 3rd prizes - Trophies

All entrants will receive a rosette for taking part  
**FREE ENTRY**

Enter on the Day

# Ardara Show 2023

## MARQUEE

Judging Commences at 10.00 a.m.

Prizes: €10, €7, €5

Entry Fee: €3

## HONEY

Class 100: Three sections of honey, evenly coloured, of any colour.

Class 101: Jar of Honey

## VEG. & FARM PRODUCE (OPEN)

Prizes: €10, €7, €5

Entry Fee: €3

**Highest total points in Classes 102-122 – H F Maloney Cup**

Class 102: Six Early Potatoes

Class 103: Six Late Potatoes

**Charlie Deane Memorial Trophy**

Class 104: Kerr's Pinks Only

**Tommy Hamilton Cup**

Class 105: Half Dozen Shallots

Class 106: Three roots of Beetroot

Class 107: Best five seed grown Onions (including sets)

Class 108: Best Twelve Pods of Peas

Class 109: Two Heads of Lettuce, crisp headed

Class 110: Two Heads of York cabbage

Class 111: Two Heads of Cabbage – Any Variety

- Class 112: Best Cauliflower
- Class 113: Three roots Parsnips
- Class 114: Three roots Carrots
- Class 115: Three Stalks Rhubarb
- Class 116: Best GIANT Vegetable, Any Variety \* NEW CLASS\*
- Class 117: Exhibit of Swedes, three roots
- Class 118: Two heads of Lettuce, Cabbage headed
- Class 119: Sod of Pasture – Not exceeding 12" X 12"
- Class 120: Sheaf of Oats
- Class 121: Tray of Garlic
- Class 122: Truss of Tomatoes
- Class 123: Best Collection of Fruit & Vegetables.

*(Not more than 7 and less than 5)*

*Presentation will be taken into account.*

**MUST BE GARDEN GROWN**

**Alphonsus Gildea Memorial Cup**

- Class 124: Any other vegetable not listed above
- Class 125: A Collecting of Fruit (Home Grown)-Not more than 3 varieties
- Class 126: Six White Hen Eggs
- Class 127: Six Brown Hen Eggs
- Class 128: Six Duck Eggs



## **FLOWERS (OPEN)**

**Hilda Hanlon Cup**

**Flowers must be home-grown.**

**Prizes: €10, €7, €5**

**Entry Fee: €3**

Class 129: Vase of Gladioli, 6 Spikes.

### **Annie Deane Memorial Vase**

Class 130: 5 Blooms of Large Flowering Dahlia

Class 131: 5 Cactus Dahlia

Class 132: 6 Stems of Ball or Pom Pom Dahlia

Class 133: Vase of 6 Roses. (Any Variety)

### **Nancy Yates Perpetual Cup**

Class 134: Vase of Sweet Pea, 12 Spikes

Class 135: Best Specimen of Begonia

Class 136: Best Collection of Home Grown Flowers

Class 137: Best Mini Arrangement of Flowers for decorating purposes  
(not exceeding 9" in width)

### **Joyce Classan Memorial Cup**

Class 138: Collection of Wild Flowers

### **Margaret Slowey Memorial Cup**

Class 139: Rose of the Show, 1 Bloom (1 prize only)

### **Terence Slowey Perpetual Rose Bowl**

**The Courthouse  
Restaurant & Bakery**

## **BAKING**

Prizes: €10, €7, €5

Entry Fee: €3

**The Courthouse  
Restaurant & Bakery**

*Sponsored by The Courthouse Restaurant and Bakery*

Exhibitor gaining the most points in the home baking section,  
Classes 140 - 170, will be presented with The Nancy Solan Cup

**All bread & Cakes must be in a minimum of 6" square or round only  
unless otherwise stated below**

Class 140: Soda Bread

**Milford Perpetual Cup**

Class 141: Soda Bread with Fruit

**Gallagher's Bakery Cup**

Class 142: Brown Bread

**Beatrice Egan Cup**

Class 143: Treacle Bread

Class 144: Banana Bread - **Loaf Tin Acceptable**

Class 145: 6 Potato Cake

Class 146: 6 Boxty

Class 147: 6 Wheaten Scones

Class 148: 6 White Soda Scones

Class 149: Porter Cake

Class 150: Tea Brack

Class 151: Boiled Cake (Prizes: €13, €10, €7)

Class 152: Cherry Cake

- Class 153: Ginger Cake (Prizes: €13, €10, €7)
- Class 154: Madeira Cake  
**Marion Gallagher Cup**
- Class 155: Fruit Cake, Rich. (Prizes: €13, €10, €7).
- Class 156: Fruit Cake, Light. (Prizes: €13, €10, €7).
- Class 157: Marble Cake
- Class 158: Sponge Sandwich or Jam Roll  
**Aisling House Trophy**
- Class 159: Coffee Sponge (Not Decorated)
- Class 160: 6 Mince Pies
- Class 161: Stack of Pancakes no more than 3
- Class 162: Best Decorated Cake
- Class 163: Apple Tart, Shortcrust
- Class 164: Any Variety Fruit Tart
- Class 165: Victoria Sandwich  
**Andy Rann Memorial Trophy**
- Class 166: Cheesecake, Any variety
- Class 167: 6 Chocolate Brownies
- Class 168: 6 Caramel Squares
- Class 169: 6 Decorated Cupcakes
- Class 170: Lemon Drizzle Cake (Loaf Tin Acceptable)



## **JAM MAKING**

1lb Pot

Prizes: €10, €7, €5

Entry Fee: €3



*Sponsored by Moran's Mega Jam*

**Exhibitor gaining most points in the Jam section classes 171-178, will be presented with The Nan Mc Gill Perpetual Memorial Cup**

Class 171: Homemade Pot of Blackcurrant Jam

Class 172: Homemade Pot of Gooseberry Jam

Class 173: Homemade Pot of Rhubarb Jam (with or without ginger)

Class 174: Homemade Pot of Marmalade

Class 175: Homemade Pot of Raspberry Jam

Class 176: Homemade Pot of Strawberry Jam

Class 177: Homemade Pot of Blackberry Jam

Class 178: Homemade Pot of Jam (Any Variety, Not Specified)



**Ardara Show 2023**

## KNITTING

Prizes: €10, €7, €5

Entry Fee: €3

Exhibitors gaining the most points in the Knitting Section Classes 179 to Class 185 will be presented with a token from John Molloy Woollen Mills

Class 179: Ladies or Gents Sweater/Cardigan-Double Wool  
**C. Kennedy & Sons Cup**

Class 180: Hand-Knitted Hat – Aran Design.

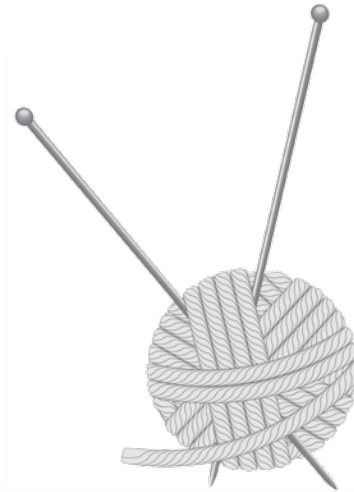
Class 181: Pair of Socks – Any wool, Plain or Fancy

Class 182: Best Hand knitted Cuddly Toy

Class 183: Best Hand knit Baby outfit

Class 184: Best Hand knitted Blanket/Throw

Class 185: Any Article in knitting not specified above



## **NEEDLEWORK (OPEN)**

Prizes: €10, €7, €5

Entry Fee: €3

**Exhibitors please note: Exhibits must be entrants' own work and must not have been exhibited at any previous Ardara Show. Needlework must be unframed for judging.**

**The Embroiderers Cup for best overall article (Classes 186 - 191)  
Sponsored by: ICA Group Ardara**

Class 186: Counted thread work e.g., drawn thread, pulled fabric, cross stitch, black work, hardanger

Class 187: Patchwork Quilt Hand or Machine sewn, quilted or unquilted

Class 188: Patchwork Quilt, Professionally Quilted

Class 189: Patchwork any article Machine sewn, quilted or unquilted

Class 190: Any Variety Fabric Craft e.g. Cuddly Toy

Class 191: Free style hand embroidery

## **IRISH CROCHET (OPEN)**

Prizes: €10, €7, €5

Entry Fee: €3

**The Dorteia Shovlin Cup for best overall article (Classes 192 - 193)**

Class 192: Any Article in Cotton Crochet

Class 193: Any Article in Wool Crochet

## ARTS & CRAFTS HAND-MADE (OPEN)

Prizes: €10, €7, €5

Entry Fee: €3

Exhibitors gaining the most points in the Tweed Section  
Classes 199 to Class 200 will be presented with a token from  
John Molloy Woollen Mills

Please keep exhibits to 60cms x 60cms due to space restrictions

Class 194: Irish Souvenir

Class 195: Best Example of Artistic Woodwork  
Eric Hadden Memorial Cup

Class 196: Six Hand-cut Turf

Class 197: Clew of Rope

Class 198: St. Bridget's Cross  
Ted Breslin Memorial Bronze St Brigid's Cross

Class 199: Best Length of Handwoven Donegal Tweed

Class 200: Best article made from Tweed



THE IRISH SHOWS ASSOCIATION &  
BALLYSHANNON AGRICULTURAL SHOW  
PRESENT

# THE ALL IRELAND TRADITIONAL HANDMADE CRAFT FINAL

SPONSORED BY: **WHITE HOTEL GROUP,**  
**HEAD OFFICE, BALLYSHANNON, CO. DONEGAL**

## RULES AND CONDITIONS

1. All items must be the sole work of the exhibitor.
2. Each exhibit must consist of 1 Article from point A plus 1 other article from points B, C or D making Total of 2 Articles:
  - A. Any article using tweed e.g. Picture (Min Size 12"x12" - Max Size 18"x18" excluding the frame and mount), Cushion (Min Size 16"x16" - Max Size 18"x18") or skirt (Adult size only) (this item is obligatory).
  - B. Any article in coloured or self-coloured embroidery made in the current year.
  - C. Hand Knit cardigan lumber jacket or jumper, Adult size only.
  - D. Any article in cotton crochet using no thicker than a No 20 cotton thread.
3. All the above to be made in the current year.
4. The items to be displayed as one exhibit
5. Any item the judge feels is produced by any other method other than hand shall be disqualified.
6. A special class will be held at each qualifying show.
7. One entry may qualify from each qualifying show for the final, if judges agree that the standard is high enough a second entry may be qualified. The Qualifiers from each of these shows will go forward to the final to be held at the Ballyshannon Agricultural Show, on Sunday 20th August.
8. Each of the successful qualifiers will receive a rosette on appearance at the final.
9. Judges decision will be final at all stages of the competition.
10. Exhibits are displayed at owners risk
11. The foregoing rules should be read in conjunction with ISA General rules, together with Ballyshannon Show Rules.
12. Exhibits must be in place for judging by 10.30am on Sunday 20th August 2023.
13. Exhibits cannot be removed from final before 4.30pm.

**FINAL: BALLYSHANNON SHOW Sunday 20th August 2023**

Ardara Show 2023



## PAINTING (OPEN)

PAINTINGS MUST BE ABLE TO BE HUNG

Prizes: €10, €7, €5

Entry Fee: €3

**Best Overall Painting, Charles Mc Hugh Memorial Cup**

Class 201: Any Subject Watercolour Painting

Class 202: Any Subject Oil Painting

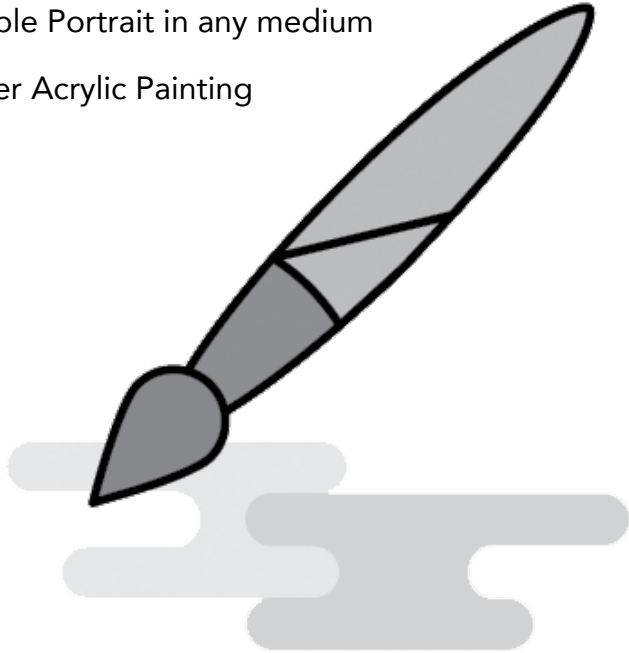
Class 203: Best example of Freehand Drawing or sketching

Class 204: Any Modern Art / Abstract

Class 205: Any Animal Portrait in any medium

Class 206: Any People Portrait in any medium

Class 207: Any Other Acrylic Painting



## PHOTOGRAPHY (AMATEURS)

CANVAS WILL NOT BE ACCEPTED

ALL PHOTOS TO BE EITHER 6" x 4" OR 7" x 5"

Prizes: €10, €7, €5

Entry Fee: €3

A prize of €25.00, sponsored by Kathleen Slowey will be awarded for the best photograph overall, Classes 208 to 214 inclusive.

Framed or Studio Photographs will not be Judged.

### Limited to 1 photo per class

Class 208: Best Colour Photograph, animal or wildlife (open)

Class 209: Best Scenic Photograph taken within Ardara Parish

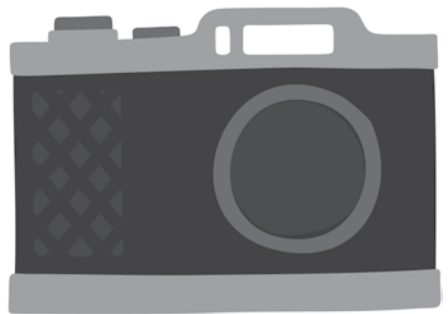
Class 210: Items of Local interest, black and white  
Place must be named.  
(Confined to Parish)

Class 211: Farm Home Scene. (Colour, Open)

Class 212: Farm Portrait, Black and White

Class 213: Best colour portrait

Class 214: Postcard View. Approx: 6"  
**Pat Slowey Shield**



THE IRISH SHOWS ASSOCIATION & TYDAVNET SHOW  
PRESENT

# THE ALL IRELAND JUNIOR CRAFT CHAMPIONSHIP



SPONSORED BY: **BREFFNI LANDSCAPES**

PRIZE FUND €415

## RULES AND CONDITIONS

1. Create and design your own Hat for Children's Day at the Races.
2. Can be put together using any of the following materials Paper Mache, card board, chicken wire, wool, thread, embroidery, plant material such as artificial flowers.
3. Competition is open to Primary School children only.
4. Exhibit to be displayed on a base 41cm by 41cm
5. The exhibit must be the sole work of the child.
6. Special qualifying class will be held at selected shows.
7. Judge's decision **will be final** at all stages of the competition.
8. **Two exhibits** will qualify at the selected shows.
9. Exhibits are displayed at owner's risk.

These rules to be read in conjunction with ISA Rules

Entry fee: To qualifying Show: €3 To final: €6

Prizes: 1<sup>st</sup> €100; 2<sup>nd</sup> €75; 3<sup>rd</sup> €50; 4<sup>th</sup> €30;  
5<sup>th</sup> to 12<sup>th</sup> €20 each

## QUALIFYING SHOWS

Adamstown	Carnew	Granard
Ardara	Castleblayney	Grange
Armagh	Castlewellan	Inishowen
Arva	Corrandulla	Kilmacanogue
Athenry	Cork Summer	Lurgan
Ballymoney	Clogher Valley	Nobber
Ballyfoyle	Dundalk	Mullingar
Bannow & Rathangan	Ennistymon	Riverstown
Carbery	Gorey	

**FINAL: TYDAVNET SHOW Saturday 19th August 2023**

# Ardara Show 2023

## CHILDRENS SECTION (OPEN)

Prizes: Rosettes/Trophies/Plaques

Entry Fee: €2

### CONFINED TO 8 YEARS OF AGE OR UNDER

Class 215: Best example of craftwork.

Class 216: Best Poster, any subject. (Not larger than A3)

Class 217: Painting in Watercolour. (Not larger than A3)

Class 218: Drawing in Pencil, Markers or Crayons. (Not larger than A4)

Class 219: Best specimen of Handwriting. (Not larger than A4)

Class 220: Best Article made from Lego or similar material.

**Not exceeding 50cms X 50cms**

Class 221. Best non-kit article from Lego

**Not exceeding 50cms X 50cms**

Class 222: Best Decorated Gingerbread Man.

Class 223: Best Decorated Wellington Boot.

Class 224: Best Fruit & Veg Man

Class 225: Best painted stone not bigger than 6 inches

Class 226: Best Potato Head

Class 227: Best Ardara Show Poster

Class 228: Best Potted Sunflower

## CONFINED TO 12 YEARS OF AGE OR UNDER

Class 229: Best example of craftwork.

Class 230: Best Poster, any subject. (Not larger than A3)

Class 231: Painting in Watercolour. (Not larger than A3)

Class 232: Drawing in Pencil, Markers or Crayons. (Not larger than A4)

Class 233: Best specimen of Handwriting. (Not larger than A4)

Class 234: Best Article made from Lego or similar material.  
**Not exceeding 50cms X 50cms**

Class 235: Best non-kit article from Lego  
**Not exceeding 50cms X 50cms**

Class 236: Best Decorated Gingerbread Man.

Class 237: Best Decorated Wellington Boot.

Class 238: Best Fruit & Veg Man

Class 239: Best painted stone not bigger than 6 inches

Class 240: Best Potato Head

Class 241: Best Ardara Show Poster

Class 242: Best Potted Sunflower

**OPEN TO EVERYONE UNDER 18 YEARS OF AGE**

Class 243: Best Anti-Litter Poster. (Not larger than A3)

**The Ardara Tidy Towns Cup.**

**To be confined to the Ardara Parish**

Class 244: Photography any subject. (No larger than 7" x 5")

Class 245: Tastiest Queen cakes – Decorated

Class 246: Tastiest Queen cakes – Not Decorated

Class 247: Tastiest White soda scones.

Class 248: Best Collection of Wild Flowers.

Class 249: Best example of Craftwork

**Sorcha Keane-Breslin Memorial Cup.**

## SPECIAL NEEDS SECTION

Prizes: Trophies/Plaques

Entry Fee: Free

Class 250: Drawing in Watercolour or Crayons, for children up to 10 Yrs.

Class 251: Drawing in Watercolour or Crayons, for children up to 15 Yrs.

Class 252: Any Article of Woodwork.

**Not exceeding 60cms X 60cms**

Class 253: Best Bunch of Wild Flowers.

Class 254: Best Lego – Any article

Class 255: Best Painting by numbers

Class 256: Best Photography any subject. (No larger than 7" x 5")

Class 257: Any article of Craft work

**Not exceeding 60cms X 60cms**

Class 258: Any Painting (Adult Class).



## DOG SHOW

*Sponsored by Pedro Dog Food*

A Fun dog Show will be held at 2pm. Entries will be taken from 1pm, and charges will be €3 for one class and €1 for additional classes. All dogs must be kept on leads, and any dogs showing aggressive behaviour will not be allowed in the ring.

**NO DOGS ALLOWED NEAR LIVESTOCK RINGS DUE TO SAFETY REASONS**

### Classes for Non-Pedigree Dogs:

1. Any type Male Non Pedigree Dog
2. Any type Female Non Pedigree Dog
3. Any type Non-Pedigree Dog open - **Dulse & Carrageen Cup**

### Classes for Non-Pedigree Dogs:

4. Any type terrier, toy or utility - **Woof & Wags Kennel Plaque**
5. Any type working, pastoral or sporting.
6. Any type hound.
7. Any type gun dog - **Downstrands Cup**

### Open Classes:

8. Best Child Handler (less than 16 years old)
9. Best Adult Handler
10. Best Veteran dog (over 8 years old)
11. Best Rescue Dog

**Pedro Top Dog of Show (open to winners of classes 1-7)**



# MARQUEE ENTRY FORM

Ardara Show 2023

# Ardara Agricultural Show

**ALL TROPHIES FROM THE 2019 SHOW  
MUST BE RETURNED BY 22ND JULY 2023**

*See special notices on trophies*

<b>MARQUEE ENTRY FORM</b>		
Class	Description of Exhibit	Entry Fee

MARQUEE ENTRY FORM

I enclose € ..... Entry Fee(s)  
 Please print in BLOCK LETTERS and state whether Mr. Mrs. or Miss  
 Name: .....  
 Address: .....  
 .....  
 Date ..... 2023  
 Phone no: ..... in case we need to contact you.  
 I have read and agree to abide by the rules and regulations set out by the  
 Ardara Show Society and the Irish Shows Association.  
 Signed .....

**ENTRIES TO**  
**Tracey McGill, Ardara Show Office, Ardara, Co. Donegal.**  
**Entries close on Saturday 22nd July 2023**

# MARQUEE ENTRY FORM

Ardara Show 2023

# Ardara Agricultural Show

**ALL TROPHIES FROM THE 2019 SHOW  
MUST BE RETURNED BY 22ND JULY 2023**

*See special notices on trophies*

<b>MARQUEE ENTRY FORM</b>		
Class	Description of Exhibit	Entry Fee

MARQUEE ENTRY FORM

I enclose € ..... Entry Fee(s)  
 Please print in BLOCK LETTERS and state whether Mr. Mrs. or Miss  
 Name: .....  
 Address: .....  
 .....  
 Date ..... 2023  
 Phone no: ..... in case we need to contact you.  
 I have read and agree to abide by the rules and regulations set out by the  
 Ardara Show Society and the Irish Shows Association.  
 Signed .....

**ENTRIES TO**  
**Tracey McGill, Ardara Show Office, Ardara, Co. Donegal.**  
**Entries close on Saturday 22nd July 2023**

# Ardara Show 2023

# MARQUEE ENTRY FORM

Ardara Show 2023

# Ardara Agricultural Show

**ALL TROPHIES FROM THE 2019 SHOW  
MUST BE RETURNED BY 22ND JULY 2023**

*See special notices on trophies*

<b>MARQUEE ENTRY FORM</b>		
Class	Description of Exhibit	Entry Fee

MARQUEE ENTRY FORM

I enclose € ..... Entry Fee(s)  
 Please print in BLOCK LETTERS and state whether Mr. Mrs. or Miss  
 Name: .....  
 Address: .....  
 .....  
 Date ..... 2023  
 Phone no: ..... in case we need to contact you.  
 I have read and agree to abide by the rules and regulations set out by the  
 Ardara Show Society and the Irish Shows Association.  
 Signed .....

**ENTRIES TO**  
**Tracey McGill, Ardara Show Office, Ardara, Co. Donegal.**  
**Entries close on Saturday 22nd July 2023**

# Ardara Show 2023

**NO SELLING OF**  
**DANGEROUS**  
**GOODS ON**  
**TRADE STANDS**



## AFTERNOON PROGRAMME

- 2.00pm Fun Dog Show & Irish Guide Dogs
- Children's Sports & Entertainment
- Penalty Kick Competition

## SPECIAL ATTRACTIONS INCLUDING

- Magical Show for all the Boys and Girls
- Entertainment from Toons and Balloons
- Vintage Tractors Display
- Live Music & Party in the Marquee

